



JOE LOMBARDO  
Governor

STATE OF NEVADA  
PUBLIC UTILITIES COMMISSION

HAYLEY WILLIAMSON  
Chair

C.J. MANTHE  
Commissioner

TAMMY CORDOVA  
Commissioner

STEPHANIE MULLEN  
Executive Director

March 29, 2023

Nevada Power Company  
d/b/a NV Energy  
6100 Neil Rd., S4A50  
Reno, NV 89511-1100

RE: Docket No.: 23-02017  
Nevada Power Company d/b/a NV Energy filed Notice No. 23-01 to adjust the Base Tariff  
Energy Rates and Deferred Energy Account Adjustment Rates effective April 1, 2023.

To Whom It May Concern:

The Regulatory Operations Staff has reviewed and processed the tariff sheets as filed in the above referenced docket. Enclosed are copies of the tariff sheets which have been accepted for filing by the Public Utilities Commission of Nevada, effective April 01, 2023.

Sincerely,

A handwritten signature in cursive script that reads "Debbie Merritt".

Debbie Merritt  
Administrative Assistant III

Enclosure(s)

cc: PUC Master File

NEVADA POWER COMPANY dba NV Energy  
P.O. Box 98910  
Las Vegas, NV 89151-0001  
Tariff No. 1-B  
cancels  
Tariff No. 1-A (withdrawn)

Cancelling 47th Revised  
46th Revised

PUCN Sheet No. 9B  
PUCN Sheet No. 9B

**Schedule DEAA**  
**DEFERRED ENERGY ACCOUNTING ADJUSTMENT**

**APPLICABLE**

The monthly energy charges for service otherwise applicable under each of the Utility's rate schedules shall be increased or decreased by an adjustment amount in accordance with the authorized Deferred Energy Accounting Adjustment rate specified below.

**TERRITORY**

Entire Nevada Service Area, as specified.

**RATES** - Monthly billings for bundled service shall be adjusted by the following:

Deferred Energy Accounting Adjustment, all kWh, per kWh

All Residential Schedules	\$0.01750	(I)
All Non-residential Schedules	\$0.01500	(I)

The energy portion of the bill will be adjusted by the product of the Kilowatt-hours of service rendered times the applicable Deferred Energy Accounting Adjustment.

**NON-BYPASSABLE DEFERRED RATES** - Applicable to the Small Standby Service Rider (SSR) Schedule as set forth in Special Condition 12 of that schedule.

Per Kilowatt (kW) of installed generation per month:

Rate I	\$10.86	(I)
Rate II	\$9.31	(I)
Rate III	\$9.31	(I)

Rates will be applied to recover or refund through a one-time charge or credit on the first bill of the customer following the billing period in which the generation was installed. The one-time charge or credit will be calculated as the product of the kW capacity of the installed generation, the applicable per month rate above, and the number of months the customer load existed on the Utility's system prior to the customer adding the generation, up to a maximum of 12 months.

Issued: **02-15-23**  
Effective: **04-01-23**  
Notice No.: **23-01**  
Advice No.:

Issued By:  
Janet Wells  
Vice President, Regulatory

Filing Accepted Effective
<b>APR 01 2023</b>
Public Utilities Commission of Nevada

NEVADA POWER COMPANY dba NV Energy  
P.O. Box 98910  
Las Vegas, NV 89151-0001  
Tariff No. 1-B  
Cancels  
Tariff No. 1-A (withdrawn)

138 th Revised  
Cancelling 137 th Revised

PUCN Sheet No. 10  
PUCN Sheet No. 10

**STATEMENT OF RATES**  
**EFFECTIVE RATES APPLICABLE TO NEVADA POWER COMPANY**  
**ELECTRIC SCHEDULES**  
**Bundled Rates**

Schedule Number & Type of Charge	BTGR	BTER	DEAA	PUBLIC POLICY RATES						Total Rate
				TRED	REPR	UEC	NOPP	ESAP	EE	
<b>RS - Residential Service</b>										
Basic Service Charge, per month										\$12.50
Consumption Charge per kWh										
All Usage	\$0.05995	\$0.08415	\$0.01750	\$0.00070	\$0.00077	\$0.00039	\$0.00142	\$0.00002	\$0.00206	\$0.16696 (1)
Excess Energy Credit per kWh (See note 13)										
<b>RM - Residential Service - Multi-Family</b>										
Basic Service Charge, per month										\$7.70
Consumption Charge per kWh										
All Usage	\$0.05186	\$0.08415	\$0.01750	\$0.00070	\$0.00077	\$0.00039	\$0.00142	\$0.00002	\$0.00186	\$0.15887 (1)
Excess Energy Credit per kWh (See note 13)										
<b>ORS-TOU - Optional Residential Service - Time-of-Use</b>										
Basic Service Charge, per month										\$12.50
Consumption Charge per kWh										
Summer On-Peak	\$0.30471	\$0.08415	\$0.01750	\$0.00070	\$0.00077	\$0.00039	\$0.00142	\$0.00002	\$0.00206	\$0.41172 (1)
Summer Off-Peak	\$0.01018	\$0.08415	\$0.01750	\$0.00070	\$0.00077	\$0.00039	\$0.00142	\$0.00002	\$0.00206	\$0.11719 (1)
Summer REVRR (Residential)	\$0.00526	\$0.08415	\$0.01750	\$0.00070	\$0.00077	\$0.00039	\$0.00142	\$0.00002	\$0.00206	\$0.11227 (1)
Electric Vehicle Recharge Rider										
Winter All other	\$0.01631	\$0.08415	\$0.01750	\$0.00070	\$0.00077	\$0.00039	\$0.00142	\$0.00002	\$0.00206	\$0.12332 (1)
Winter REVRR (Residential)	\$0.01078	\$0.08415	\$0.01750	\$0.00070	\$0.00077	\$0.00039	\$0.00142	\$0.00002	\$0.00206	\$0.11779 (1)
Electric Vehicle Recharge Rider										
<b>Option A</b>										
Basic Service Charge, per month										\$12.50
Consumption Charge per kWh										
Summer On-Peak	\$0.26792	\$0.08415	\$0.01750	\$0.00070	\$0.00077	\$0.00039	\$0.00142	\$0.00002	\$0.00206	\$0.37493 (1)
Summer Off-Peak	\$0.00671	\$0.08415	\$0.01750	\$0.00070	\$0.00077	\$0.00039	\$0.00142	\$0.00002	\$0.00206	\$0.11372 (1)
Summer REVRR (Residential)	\$0.00214	\$0.08415	\$0.01750	\$0.00070	\$0.00077	\$0.00039	\$0.00142	\$0.00002	\$0.00206	\$0.10915 (1)
Electric Vehicle Recharge Rider										
Winter All other	\$0.00601	\$0.08415	\$0.01750	\$0.00070	\$0.00077	\$0.00039	\$0.00142	\$0.00002	\$0.00206	\$0.11302 (1)
Winter REVRR (Residential)	\$0.00151	\$0.08415	\$0.01750	\$0.00070	\$0.00077	\$0.00039	\$0.00142	\$0.00002	\$0.00206	\$0.10852 (1)
Electric Vehicle Recharge Rider										
<b>Option B</b>										
Basic Service Charge, per month										\$26.90
Consumption Charge per kWh										
Summer On-Peak	\$0.40478	\$0.08415	\$0.01750	\$0.00070	\$0.00077	\$0.00039	\$0.00142	\$0.00002	\$0.00206	\$0.51179 (1)
Summer Off-Peak	\$0.00914	\$0.08415	\$0.01750	\$0.00070	\$0.00077	\$0.00039	\$0.00142	\$0.00002	\$0.00206	\$0.11615 (1)
Summer REVRR (Residential)	\$0.00432	\$0.08415	\$0.01750	\$0.00070	\$0.00077	\$0.00039	\$0.00142	\$0.00002	\$0.00206	\$0.11133 (1)
Electric Vehicle Recharge Rider										
Winter All other	\$0.00489	\$0.08415	\$0.01750	\$0.00070	\$0.00077	\$0.00039	\$0.00142	\$0.00002	\$0.00206	\$0.11170 (1)
Winter REVRR (Residential)	\$0.00032	\$0.08415	\$0.01750	\$0.00070	\$0.00077	\$0.00039	\$0.00142	\$0.00002	\$0.00206	\$0.10733 (1)
Electric Vehicle Recharge Rider										
Excess Energy Credit per kWh (See note 13)										
<b>ORM-TOU - Optional Multi-Family Residential Service - Time-of-Use</b>										
Basic Service Charge, per month										\$7.70
Consumption Charge per kWh										
Summer On-Peak	\$0.26153	\$0.08415	\$0.01750	\$0.00070	\$0.00077	\$0.00039	\$0.00142	\$0.00002	\$0.00186	\$0.36834 (1)
Summer Off-Peak	\$0.03523	\$0.08415	\$0.01750	\$0.00070	\$0.00077	\$0.00039	\$0.00142	\$0.00002	\$0.00186	\$0.14204 (1)
Summer RMEVRR (Residential Multi-Family)	\$0.02781	\$0.08415	\$0.01750	\$0.00070	\$0.00077	\$0.00039	\$0.00142	\$0.00002	\$0.00186	\$0.13462 (1)
Electric Vehicle Recharge Rider										
Winter All other	\$0.01164	\$0.08415	\$0.01750	\$0.00070	\$0.00077	\$0.00039	\$0.00142	\$0.00002	\$0.00186	\$0.11845 (1)
Winter RMEVRR (Residential Multi-Family)	\$0.00657	\$0.08415	\$0.01750	\$0.00070	\$0.00077	\$0.00039	\$0.00142	\$0.00002	\$0.00186	\$0.11338 (1)
Electric Vehicle Recharge Rider										

(Continued)

Issued: 02-15-23

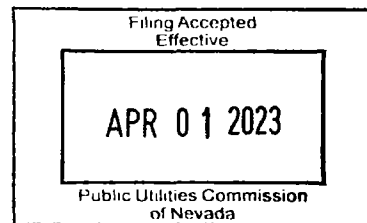
Issued By:

Effective: 04-01-23

Janet Wells

Notice No.: 23-01  
Advice No.:

Vice President, Regulatory



NEVADA POWER COMPANY dba NV Energy  
P.O. Box 98910  
Las Vegas, NV 89151-0001  
Tariff No. 1-B  
Cancels  
Tariff No. 1-A (withdrawn)

89 th Revised  
Cancelling 88 th Revised

PUCN Sheet No 10A  
PUCN Sheet No 10A

**STATEMENT OF RATES**  
**EFFECTIVE RATES APPLICABLE TO NEVADA POWER COMPANY**  
**ELECTRIC SCHEDULES**  
Bundled Rates  
(Continued)

Schedule Number & Type of Charge	BTGR	BTER	DEAA	PUBLIC POLICY RATES						Total Rate
				TRED	REPR	UEC	NDPP	ESAP	EE	
<b>ORM-TOU – Optional Multi-Family Residential Service – Time-of-Use (Continued)</b>										
<b>Option A</b>										
Basic Service Charge, per month										\$7.70
Consumption Charge per kWh										
Summer On-Peak	\$0.24830	\$0.08415	\$0.01750	\$0.00070	\$0.00077	\$0.00039	\$0.00142	\$0.00002	\$0.00186	\$0.35511 (f)
Summer Off-Peak	\$0.02469	\$0.08415	\$0.01750	\$0.00070	\$0.00077	\$0.00039	\$0.00142	\$0.00002	\$0.00186	\$0.13150 (f)
Summer RMEVRR (Residential Multi-Family Electric Vehicle Recharge Rider)	\$0.01832	\$0.08415	\$0.01750	\$0.00070	\$0.00077	\$0.00039	\$0.00142	\$0.00002	\$0.00186	\$0.12513 (f)
Winter All other	\$0.00596	\$0.08415	\$0.01750	\$0.00070	\$0.00077	\$0.00039	\$0.00142	\$0.00002	\$0.00186	\$0.11277 (f)
Winter RMEVRR (Residential Multi-Family Electric Vehicle Recharge Rider)	\$0.00148	\$0.08415	\$0.01750	\$0.00070	\$0.00077	\$0.00039	\$0.00142	\$0.00002	\$0.00186	\$0.10827 (f)
<b>Option B</b>										
Basic Service Charge, per month										\$13.20
Consumption Charge per kWh										
Summer On-Peak	\$0.24920	\$0.08415	\$0.01750	\$0.00070	\$0.00077	\$0.00039	\$0.00142	\$0.00002	\$0.00186	\$0.35601 (f)
Summer Off-Peak	\$0.05629	\$0.08415	\$0.01750	\$0.00070	\$0.00077	\$0.00039	\$0.00142	\$0.00002	\$0.00186	\$0.16310 (f)
Summer RMEVRR (Residential Multi-Family Electric Vehicle Recharge Rider)	\$0.04876	\$0.08415	\$0.01750	\$0.00070	\$0.00077	\$0.00039	\$0.00142	\$0.00002	\$0.00186	\$0.15357 (f)
Winter All other	\$0.01616	\$0.08415	\$0.01750	\$0.00070	\$0.00077	\$0.00039	\$0.00142	\$0.00002	\$0.00186	\$0.12297 (f)
Winter RMEVRR (Residential Multi-Family Electric Vehicle Recharge Rider)	\$0.01064	\$0.08415	\$0.01750	\$0.00070	\$0.00077	\$0.00039	\$0.00142	\$0.00002	\$0.00186	\$0.11745 (f)
Excess Energy Credit per kWh (See note 13)										
<b>LRS – Large Residential Service</b>										
Basic Service Charge, per month										\$70.70
Consumption Charge per kWh										
All Usage	\$0.05216	\$0.08415	\$0.01750	\$0.00070	\$0.00077	\$0.00039	\$0.00142	\$0.00002	\$0.00156	\$0.15867 (f)
Excess Energy Credit per kWh (See note 13)										
<b>OLRS-TOU – Optional Large Residential Service – Time-of-Use</b>										
Basic Service Charge, per month										\$70.70
Consumption Charge per kWh										
Summer On-Peak	\$0.30090	\$0.08415	\$0.01750	\$0.00070	\$0.00077	\$0.00039	\$0.00142	\$0.00002	\$0.00156	\$0.40741 (f)
Summer Off-Peak	\$0.01793	\$0.08415	\$0.01750	\$0.00070	\$0.00077	\$0.00039	\$0.00142	\$0.00002	\$0.00156	\$0.12444 (f)
Summer REVRR (Residential Electric Vehicle Recharge Rider)	\$0.01224	\$0.08415	\$0.01750	\$0.00070	\$0.00077	\$0.00039	\$0.00142	\$0.00002	\$0.00156	\$0.11875 (f)
Winter All other	\$0.01582	\$0.08415	\$0.01750	\$0.00070	\$0.00077	\$0.00039	\$0.00142	\$0.00002	\$0.00156	\$0.12233 (f)
Winter REVRR (Residential Electric Vehicle Recharge Rider)	\$0.01034	\$0.08415	\$0.01750	\$0.00070	\$0.00077	\$0.00039	\$0.00142	\$0.00002	\$0.00156	\$0.11685 (f)
<b>Option A</b>										
Basic Service Charge, per month										\$70.70
Consumption Charge per kWh										
Summer On-Peak	\$0.27813	\$0.08415	\$0.01750	\$0.00070	\$0.00077	\$0.00039	\$0.00142	\$0.00002	\$0.00156	\$0.38464 (f)
Summer Off-Peak	\$0.00868	\$0.08415	\$0.01750	\$0.00070	\$0.00077	\$0.00039	\$0.00142	\$0.00002	\$0.00156	\$0.11519 (f)
Summer REVRR (Residential Electric Vehicle Recharge Rider)	\$0.00391	\$0.08415	\$0.01750	\$0.00070	\$0.00077	\$0.00039	\$0.00142	\$0.00002	\$0.00156	\$0.11042 (f)
Winter All other	\$0.00866	\$0.08415	\$0.01750	\$0.00070	\$0.00077	\$0.00039	\$0.00142	\$0.00002	\$0.00156	\$0.11517 (f)
Winter REVRR (Residential Electric Vehicle Recharge Rider)	\$0.00389	\$0.08415	\$0.01750	\$0.00070	\$0.00077	\$0.00039	\$0.00142	\$0.00002	\$0.00156	\$0.11040 (f)
Excess Energy Credit per kWh (See note 13)										

(Continued)

Issued: **02-15-23**  
Effective: **04-01-23**  
Notice No : **23-01**  
Advice No.:

Issued By:  
**Janet Wells**  
Vice President, Regulatory

Filing Accepted  
Effective  
**APR 01 2023**  
Public Utilities Commission  
of Nevada

NEVADA POWER COMPANY dba NV Energy  
P.O. Box 98910  
Las Vegas, NV 89151-0001  
Tariff No. 1-B  
Cancels  
Tariff No. 1-A (withdrawn)

Cancelling 29 th Revised  
28 th Revised

PUCN Sheet No. 10A(1)  
PUCN Sheet No. 10A(1)

**STATEMENT OF RATES**  
**EFFECTIVE RATES APPLICABLE TO NEVADA POWER COMPANY**  
**ELECTRIC SCHEDULES**  
**Bundled Rates**  
(Continued)

Schedule Number & Type of Charge	BTGR	BTER	DEAA	PUBLIC POLICY RATES						Total Rate	
				TRED	REPR	UEC	NDPP	ESAP	EE		
<b>OLRS-TOU – Optional Large Residential Service – Time-of-Use (Continued)</b>											
<b>Option B</b>											
Basic Service Charge, per month										\$181.10	
Consumption Charge per kWh											
Summer On-Peak	\$0.23279	\$0.08415	\$0.01750	\$0.00070	\$0.00077	\$0.00039	\$0.00142	\$0.00002	\$0.00156	\$0.33930	(I)
Summer Off-Peak	\$0.03210	\$0.08415	\$0.01750	\$0.00070	\$0.00077	\$0.00039	\$0.00142	\$0.00002	\$0.00156	\$0.13861	(I)
Summer REVRR (Residential Electric Vehicle Recharge Rider)	\$0.02499	\$0.08415	\$0.01750	\$0.00070	\$0.00077	\$0.00039	\$0.00142	\$0.00002	\$0.00156	\$0.13150	(I)
Winter All other	\$0.00786	\$0.08415	\$0.01750	\$0.00070	\$0.00077	\$0.00039	\$0.00142	\$0.00002	\$0.00156	\$0.11437	(I)
Winter REVRR (Residential Electric Vehicle Recharge Rider)	\$0.00317	\$0.08415	\$0.01750	\$0.00070	\$0.00077	\$0.00039	\$0.00142	\$0.00002	\$0.00156	\$0.10968	(I)
<b>GS – General Service</b>											
Basic Service Charge, per month										\$25.50	
Consumption Charge per kWh											
All Usage	\$0.01802	\$0.07980	\$0.01500	\$0.00057	\$0.00077	\$0.00039	\$0.00142	\$0.00002	\$0.00139	\$0.11718	(I)
Meter Charge per additional meter per month										\$2.50	
Excess Energy Credit per kWh (See note 13)											
<b>OGS-TOU – Optional General Service – Time-of-Use</b>											
Basic Service Charge, per month										\$25.50	
Consumption Charge per kWh											
Summer On-Peak	\$0.08215	\$0.07980	\$0.01500	\$0.00057	\$0.00077	\$0.00039	\$0.00142	\$0.00002	\$0.00139	\$0.16131	(I)
Summer Off-Peak	\$0.01391	\$0.07980	\$0.01500	\$0.00057	\$0.00077	\$0.00039	\$0.00142	\$0.00002	\$0.00139	\$0.11307	(I)
Summer GSEVRR (General Service Electric Vehicle Recharge Rider)	\$0.00854	\$0.07980	\$0.01500	\$0.00057	\$0.00077	\$0.00039	\$0.00142	\$0.00002	\$0.00139	\$0.10770	(I)
Winter All other	\$0.01260	\$0.07980	\$0.01500	\$0.00057	\$0.00077	\$0.00039	\$0.00142	\$0.00002	\$0.00139	\$0.11176	(I)
Winter GSEVRR (General Service Electric Vehicle Recharge Rider)	\$0.00736	\$0.07980	\$0.01500	\$0.00057	\$0.00077	\$0.00039	\$0.00142	\$0.00002	\$0.00139	\$0.10852	(I)
Meter Charge per additional meter per month										\$2.50	
Excess Energy Credit per kWh (See note 13)											
<b>ORS-DDP – Optional Residential Service – Daily Demand Pricing</b>											
Basic Service Charge, per month										\$5.75	
Consumption Charge per kWh											
All Usage	\$0.03642	\$0.08415	\$0.01750	\$0.00070	\$0.00077	\$0.00039	\$0.00142	\$0.00002	\$0.00206	\$0.14343	(I)
Demand Charge per kW											
Summer On-Peak Period										\$0.16	
Winter Period										\$0.05	
Facilities Charge all kW per kW										\$0.16	
Excess Energy Credit per kWh (See note 13)											
<b>ORS-CPP – Optional Residential Service – Critical Peak Price</b>											
Basic Service Charge, per month										\$12.50	
Consumption Charge per kWh											
Critical Peak Period	\$0.62872	\$0.08415	\$0.01750	\$0.00070	\$0.00077	\$0.00039	\$0.00142	\$0.00002	\$0.00206	\$0.73573	(I)
Summer On-Peak	\$0.27394	\$0.08415	\$0.01750	\$0.00070	\$0.00077	\$0.00039	\$0.00142	\$0.00002	\$0.00206	\$0.38095	(I)
Summer Off-Peak	\$0.01391	\$0.08415	\$0.01750	\$0.00070	\$0.00077	\$0.00039	\$0.00142	\$0.00002	\$0.00206	\$0.12092	(I)
Summer REVRR (Residential Electric Vehicle Recharge Rider)	\$0.00862	\$0.08415	\$0.01750	\$0.00070	\$0.00077	\$0.00039	\$0.00142	\$0.00002	\$0.00206	\$0.11563	(I)

(Continued)

Issued: <b>02-15-23</b>	Issued By:	<div style="border: 2px solid black; padding: 10px; text-align: center;">           Filing Accepted            Effective   <b>APR 01 2023</b>             Public Utilities Commission            of Nevada         </div>
Effective: <b>04-01-23</b>	Janet Wells	
Notice No.: <b>23-01</b> Advice No.:	Vice President, Regulatory	

NEVADA POWER COMPANY dba NV Energy  
P.O. Box 98910  
Las Vegas, NV 89151-0001  
Tariff No. 1-B  
Cancels  
Tariff No. 1-A (withdrawn)

Cancelling 25 th Revised  
24 th Revised

PUCN Sheet No 10A(2)  
PUCN Sheet No 10A(2)

**STATEMENT OF RATES**  
**EFFECTIVE RATES APPLICABLE TO NEVADA POWER COMPANY**  
**ELECTRIC SCHEDULES**  
**Bundled Rates**  
(Continued)

Schedule Number & Type of Charge	BTGR	BTER	DEAA	PUBLIC POLICY RATES						Total Rate
				TRED	REPR	UEC	NDPP	ESAP	EE	
<b>ORS-CPP – Optional Residential Service – Critical Peak Price (Continued)</b>										
Winter All other	\$0.00583	\$0.08415	\$0.01750	\$0.00070	\$0.00077	\$0.00039	\$0.00142	\$0.00002	\$0.00206	\$0.11284 (f)
Winter REVRR (Residential)	\$0.00135	\$0.08415	\$0.01750	\$0.00070	\$0.00077	\$0.00039	\$0.00142	\$0.00002	\$0.00208	\$0.10836 (f)
Electric Vehicle Recharge Rider										
Excess Energy Credit per kWh (See note 13)										
<b>ORS-TOU-CPP+DDP – Optional Residential Service – Time-of-Use – Critical Peak Price + Daily Demand Pricing</b>										
Basic Service Charge, per month										\$12.50
Consumption Charge per kWh										
Critical Peak Period	\$0.62872	\$0.08415	\$0.01750	\$0.00070	\$0.00077	\$0.00039	\$0.00142	\$0.00002	\$0.00206	\$0.73573 (f)
Summer On-Peak	\$0.16594	\$0.08415	\$0.01750	\$0.00070	\$0.00077	\$0.00039	\$0.00142	\$0.00002	\$0.00208	\$0.27295 (f)
Summer Off-Peak	\$0.01251	\$0.08415	\$0.01750	\$0.00070	\$0.00077	\$0.00039	\$0.00142	\$0.00002	\$0.00206	\$0.11952 (f)
Summer REVRR (Residential)	\$0.00736	\$0.08415	\$0.01750	\$0.00070	\$0.00077	\$0.00039	\$0.00142	\$0.00002	\$0.00206	\$0.11437 (f)
Electric Vehicle Recharge Rider										
Winter All other	\$0.01631	\$0.08415	\$0.01750	\$0.00070	\$0.00077	\$0.00039	\$0.00142	\$0.00002	\$0.00208	\$0.12332 (f)
Winter REVRR (Residential)	\$0.01078	\$0.08415	\$0.01750	\$0.00070	\$0.00077	\$0.00039	\$0.00142	\$0.00002	\$0.00208	\$0.11778 (f)
Electric Vehicle Recharge Rider										
Demand Charge per kW										
Summer On-Peak Period										\$0.16
Winter Period										\$0.05
Excess Energy Credit per kWh (See note 13)										
<b>ORM-DDP – Optional Residential Service – Multi Family – Daily Demand Pricing</b>										
Basic Service Charge, per month										\$5.25
Consumption Charge per kWh										
All Usage	\$0.03673	\$0.08415	\$0.01750	\$0.00070	\$0.00077	\$0.00039	\$0.00142	\$0.00002	\$0.00186	\$0.14354 (f)
Demand Charge per kW										
Summer On-Peak Period										\$0.07
Winter Period										\$0.05
Facilities Charge all kW per kW										\$0.07
Excess Energy Credit per kWh (See note 13)										
<b>ORM-CPP – Optional Residential Service – Multi Family – Critical Peak Price</b>										
Basic Service Charge, per month										\$7.70
Consumption Charge per kWh										
Critical Peak Period	\$0.41715	\$0.08415	\$0.01750	\$0.00070	\$0.00077	\$0.00039	\$0.00142	\$0.00002	\$0.00186	\$0.52398 (f)
Summer On-Peak	\$0.23578	\$0.08415	\$0.01750	\$0.00070	\$0.00077	\$0.00039	\$0.00142	\$0.00002	\$0.00186	\$0.34259 (f)
Summer Off-Peak	\$0.02964	\$0.08415	\$0.01750	\$0.00070	\$0.00077	\$0.00039	\$0.00142	\$0.00002	\$0.00186	\$0.13645 (f)
Summer RMEVRR (Residential Multi-Family)	\$0.02277	\$0.08415	\$0.01750	\$0.00070	\$0.00077	\$0.00039	\$0.00142	\$0.00002	\$0.00186	\$0.12958 (f)
Electric Vehicle Recharge Rider										
Winter All other	\$0.01504	\$0.08415	\$0.01750	\$0.00070	\$0.00077	\$0.00039	\$0.00142	\$0.00002	\$0.00186	\$0.12185 (f)
Winter RMEVRR (Residential Multi-Family)	\$0.00963	\$0.08415	\$0.01750	\$0.00070	\$0.00077	\$0.00039	\$0.00142	\$0.00002	\$0.00186	\$0.11644 (f)
Electric Vehicle Recharge Rider										
Excess Energy Credit per kWh (See note 13)										
<b>ORM-TOU-CPP+DDP – Optional Residential Service – Multi Family – Time-of-Use – Critical Peak Price + Daily Demand Pricing</b>										
Basic Service Charge, per month										\$7.70
Consumption Charge per kWh										
Critical Peak Period	\$0.41715	\$0.08415	\$0.01750	\$0.00070	\$0.00077	\$0.00039	\$0.00142	\$0.00002	\$0.00186	\$0.52396 (f)
Summer On-Peak	\$0.21104	\$0.08415	\$0.01750	\$0.00070	\$0.00077	\$0.00039	\$0.00142	\$0.00002	\$0.00186	\$0.31785 (f)

(Continued)

Issued: <b>02-15-23</b>	Issued By:	<div style="border: 1px solid black; padding: 10px; text-align: center;"> Filing Accepted  Effective    <b>APR 01 2023</b>    Public Utilities Commission  of Nevada </div>
Effective: <b>04-01-23</b>	Janet Wells	
Notice No.: <b>23-01</b> Advice No.:	Vice President, Regulatory	

NEVADA POWER COMPANY dba NV Energy  
P.O. Box 98910  
Las Vegas, NV 89151-0001  
Tariff No. 1-B  
Cancels  
Tariff No. 1-A (withdrawn)

23 rd Revised  
Cancelling 22 nd Revised

PUCN Sheet No 10A(3)  
PUCN Sheet No 10A(3)

**STATEMENT OF RATES**  
**EFFECTIVE RATES APPLICABLE TO NEVADA POWER COMPANY**  
**ELECTRIC SCHEDULES**  
**Bundled Rates**  
(Continued)

Schedule Number & Type of Charge	PUBLIC POLICY RATES									Total Rate
	BTGR	BTER	DEAA	TRED	REPR	UEC	NDPP	ESAP	EE	
<b>ORM-TOU-CPP+DDP – Optional Residential Service – Multi Family – Time-of-Use – Critical Peak Price + Daily Demand Pricing (Continued)</b>										
Summer Off-Peak	\$0.02964	\$0.08415	\$0.01750	\$0.00070	\$0.00077	\$0.00039	\$0.00142	\$0.00002	\$0.00186	\$0.13645 (1)
Summer RMEVRR (Residential Multi-Family Electric Vehicle Recharge Rider)	\$0.02277	\$0.08415	\$0.01750	\$0.00070	\$0.00077	\$0.00039	\$0.00142	\$0.00002	\$0.00186	\$0.12958 (1)
Winter All other	\$0.00593	\$0.08415	\$0.01750	\$0.00070	\$0.00077	\$0.00039	\$0.00142	\$0.00002	\$0.00186	\$0.11274 (1)
Winter RMEVRR (Residential Multi-Family Electric Vehicle Recharge Rider)	\$0.00144	\$0.08415	\$0.01750	\$0.00070	\$0.00077	\$0.00039	\$0.00142	\$0.00002	\$0.00186	\$0.10825 (1)
Demand Charge per kW										
Summer On-Peak Period										\$0.07
Winter Period										\$0.05
Excess Energy Credit per kWh (See note 13)										
<b>OLRS-DDP – Optional Large Residential Service – Daily Demand Pricing</b>										
Basic Service Charge, per month										\$13.00
Consumption Charge per kWh										
All Usage	\$0.03666	\$0.08415	\$0.01750	\$0.00070	\$0.00077	\$0.00039	\$0.00142	\$0.00002	\$0.00156	\$0.14319 (1)
Demand Charge per kW										
Summer On-Peak Period										\$0.23
Winter Period										\$0.05
Facilities Charge all kW per kW										\$0.18
Excess Energy Credit per kWh (See note 13)										
<b>OLRS-CPP – Optional Large Residential Service – Critical Peak Price</b>										
Basic Service Charge, per month										\$70.70
Consumption Charge per kWh										
Critical Peak Period	\$0.33064	\$0.08415	\$0.01750	\$0.00070	\$0.00077	\$0.00039	\$0.00142	\$0.00002	\$0.00156	\$0.43715 (1)
Summer On-Peak	\$0.27169	\$0.08415	\$0.01750	\$0.00070	\$0.00077	\$0.00039	\$0.00142	\$0.00002	\$0.00156	\$0.37820 (1)
Summer Off-Peak	\$0.01496	\$0.08415	\$0.01750	\$0.00070	\$0.00077	\$0.00039	\$0.00142	\$0.00002	\$0.00156	\$0.12147 (1)
Summer REVRR (Residential Electric Vehicle Recharge Rider)	\$0.00956	\$0.08415	\$0.01750	\$0.00070	\$0.00077	\$0.00039	\$0.00142	\$0.00002	\$0.00156	\$0.11607 (1)
Winter All other	\$0.02229	\$0.08415	\$0.01750	\$0.00070	\$0.00077	\$0.00039	\$0.00142	\$0.00002	\$0.00156	\$0.12880 (1)
Winter REVRR (Residential Electric Vehicle Recharge Rider)	\$0.01616	\$0.08415	\$0.01750	\$0.00070	\$0.00077	\$0.00039	\$0.00142	\$0.00002	\$0.00156	\$0.12267 (1)
Excess Energy Credit per kWh (See note 13)										
<b>OLRS-TOU-CPP+DDP – Optional Large Residential Service – Time-of-Use – Critical Peak Price + Daily Demand Pricing</b>										
Basic Service Charge, per month										\$70.70
Consumption Charge per kWh										
Critical Peak Period	\$0.33064	\$0.08415	\$0.01750	\$0.00070	\$0.00077	\$0.00039	\$0.00142	\$0.00002	\$0.00156	\$0.43715 (1)
Summer On-Peak	\$0.22227	\$0.08415	\$0.01750	\$0.00070	\$0.00077	\$0.00039	\$0.00142	\$0.00002	\$0.00156	\$0.32878 (1)
Summer Off-Peak	\$0.01496	\$0.08415	\$0.01750	\$0.00070	\$0.00077	\$0.00039	\$0.00142	\$0.00002	\$0.00156	\$0.12147 (1)
Summer REVRR (Residential Electric Vehicle Recharge Rider)	\$0.00956	\$0.08415	\$0.01750	\$0.00070	\$0.00077	\$0.00039	\$0.00142	\$0.00002	\$0.00156	\$0.11607 (1)
Winter All other	\$0.01893	\$0.08415	\$0.01750	\$0.00070	\$0.00077	\$0.00039	\$0.00142	\$0.00002	\$0.00156	\$0.12544 (1)
Winter REVRR (Residential Electric Vehicle Recharge Rider)	\$0.01314	\$0.08415	\$0.01750	\$0.00070	\$0.00077	\$0.00039	\$0.00142	\$0.00002	\$0.00156	\$0.11965 (1)
Demand Charge per kW										
Summer On-Peak Period										\$0.23
Winter Period										\$0.05
Excess Energy Credit per kWh (See note 13)										

(Continued)

Issued:	<b>02-15-23</b>	Issued By:	<div style="border: 1px solid black; padding: 10px; text-align: center;">                 Filing Accepted Effective  <div style="border: 1px solid black; padding: 5px; display: inline-block; margin: 5px 0;"> <b>APR 01 2023</b> </div>                  Public Utilities Commission of Nevada             </div>
Effective:	<b>04-01-23</b>	Janet Wells	
Notice No.: Advice No.:	<b>23-01</b>	Vice President, Regulatory	

NEVADA POWER COMPANY dba NV Energy  
P.O. Box 98910  
Las Vegas, NV 89151-0001  
Tariff No. 1-B  
Cancels  
Tariff No. 1-A (withdrawn)

Cancelling 89 th Revised  
88 th Revised

PUCN Sheet No. 10B  
PUCN Sheet No. 10B

<b>STATEMENT OF RATES</b>										
<b>EFFECTIVE RATES APPLICABLE TO NEVADA POWER COMPANY</b>										
<b>ELECTRIC SCHEDULES</b>										
<b>Bundled Rates</b>										
(Continued)										
Schedule Number & Type of Charge	BTGR	BTER	DEAA	PUBLIC POLICY RATES						Total Rate
				TRED	REPR	UEC	NDPP	ESAP	EE	
<b>LGS-1 - Large General Service - 1</b>										
Basic Service Charge, per month										\$15.80
Consumption Charge per kWh										
All Usage	\$0.01522	\$0.07980	\$0.01500	\$0.00057	\$0.00077	\$0.00039	\$0.00142	\$0.00002	\$0.00145	\$0.11444 (I)
Demand Charge, All kW per kW										\$4.01
Facilities Charge, All kW per kW										\$3.68
Meter Charge per additional meter per month										\$6.25
<b>OLGS-1-TOU - Optional Large General Service - 1 - Time-of-Use</b>										
Basic Service Charge, per month										\$15.80
Consumption Charge per kWh										
Summer On-Peak Period	\$0.10994	\$0.07960	\$0.01500	\$0.00057	\$0.00077	\$0.00039	\$0.00142	\$0.00002	\$0.00145	\$0.20916 (I)
Summer Off-Peak Period	\$0.00680	\$0.07960	\$0.01500	\$0.00057	\$0.00077	\$0.00039	\$0.00142	\$0.00002	\$0.00145	\$0.10602 (I)
Winter All Other	\$0.00578	\$0.07960	\$0.01500	\$0.00057	\$0.00077	\$0.00039	\$0.00142	\$0.00002	\$0.00145	\$0.10500 (I)
Demand Charge per kW										
Summer On-Peak Period										\$7.60
Winter All Other										\$0.26
Facilities Charge, All kW per kW										\$3.68
Meter Charge per additional meter per month										\$6.25
<b>GSEVRR (General Service Electric Vehicle Recharge Rider)</b>										
Consumption Charge per kWh										
Summer EV Recharge Period	\$0.00214	\$0.07960	\$0.01500	\$0.00057	\$0.00077	\$0.00039	\$0.00142	\$0.00002	\$0.00145	\$0.10136 (I)
Winter EV Recharge Period	\$0.00122	\$0.07960	\$0.01500	\$0.00057	\$0.00077	\$0.00039	\$0.00142	\$0.00002	\$0.00145	\$0.10044 (I)
<b>EVCCR (Electric Vehicle Commercial Charging Rider)</b>										
Consumption Charge per kWh										
Summer EV Recharge Period	\$0.00680	\$0.07960	\$0.01500	\$0.00057	\$0.00077	\$0.00039	\$0.00142	\$0.00002	\$0.00145	\$0.10602 (I)
Winter EV Recharge Period	\$0.00578	\$0.07960	\$0.01500	\$0.00057	\$0.00077	\$0.00039	\$0.00142	\$0.00002	\$0.00145	\$0.10500 (I)
<b>EVCCR BTGR Transition Rate per kWh (See note 12)</b>										
Summer On-Peak Period										\$0.03430 (R)
Winter All Other										\$0.00053 (R)
<b>EVCCR Reduction Rate per kWh (See note 12)</b>										
Summer EV Recharge Period										(\$0.00419)
Winter EV Recharge Period										(\$0.00410)
<b>EVCCR Demand Rate Reduction per kW (See note 12)</b>										
Summer On-Peak Period										(\$4.56) (I)
Winter All Other										(\$0.16) (I)
<b>LGS-2 - Large General Service - 2</b>										
<b>Secondary Distribution Voltage</b>										
Basic Service Charge, per month										\$122.40
Consumption Charge per kWh										
Summer On-Peak Period	\$0.03242	\$0.07960	\$0.01500	\$0.00057	\$0.00077	\$0.00039	\$0.00142	\$0.00002	\$0.00135	\$0.13154 (I)
Summer Mid-Peak Period	\$0.01573	\$0.07960	\$0.01500	\$0.00057	\$0.00077	\$0.00039	\$0.00142	\$0.00002	\$0.00135	\$0.11485 (I)
Summer Off-Peak Period	\$0.00053	\$0.07960	\$0.01500	\$0.00057	\$0.00077	\$0.00039	\$0.00142	\$0.00002	\$0.00135	\$0.09965 (I)
Winter All Other	\$0.00572	\$0.07960	\$0.01500	\$0.00057	\$0.00077	\$0.00039	\$0.00142	\$0.00002	\$0.00135	\$0.10484 (I)
(Continued)										
Issued:	02-15-23			Issued By:						
Effective:	04-01-23			Janet Wells						
Notice No.:	23-01			Vice President, Regulatory						
Advice No.:										
<div style="border: 1px solid black; padding: 10px; width: fit-content; margin: auto;"> <p style="text-align: center;">Filing Accepted Effective</p> <div style="border: 1px solid black; padding: 5px; text-align: center; font-size: 24px; font-weight: bold; margin: 5px auto;">APR 01 2023</div> <p style="text-align: center;">Public Utilities Commission of Nevada</p> </div>										



NEVADA POWER COMPANY dba NV Energy  
P.O. Box 98910  
Las Vegas, NV 89151-0001  
Tariff No. 1-B

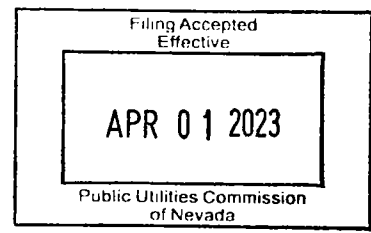
Cancels

Tariff No. 1-A (withdrawn)

Cancelling 21 st Revised  
20 th Revised

PUCN Sheet No. 10B(1)  
PUCN Sheet No. 10B(1)

<b>STATEMENT OF RATES</b>										
<b>EFFECTIVE RATES APPLICABLE TO NEVADA POWER COMPANY</b>										
<b>ELECTRIC SCHEDULES</b>										
<b>Bundled Rates</b>										
(Continued)										
PUBLIC POLICY RATES										
Schedule Number & Type of Charge	BTGR	BTER	DEAA	TRED	REPR	UEC	NDPP	ESAP	EE	Total Rate
<b>LGS-2 - Large General Service - 2 (Continued)</b>										
<b>Secondary Distribution Voltage (Continued)</b>										
Demand Charge per kW										
Summer On-Peak Period										\$12.81
Summer Mid-Peak Period										\$2.65
Winter All Other										\$0.80
Facilities Charge all kW per kW										\$2.68
Meter Charge per additional meter per month										\$9.75
EVCCR (Electric Vehicle Commercial Charging Rider)										
Consumption Charge per kWh										
Summer EV Recharge Period	\$0.00053	\$0.07960	\$0.01500	\$0.00057	\$0.00077	\$0.00039	\$0.00142	\$0.00002	\$0.00135	\$0.09965 (I)
Winter EV Recharge Period	\$0.00572	\$0.07980	\$0.01500	\$0.00057	\$0.00077	\$0.00039	\$0.00142	\$0.00002	\$0.00135	\$0.10484 (I)
EVCCR BTGR Transition Rate per kWh (See note 12)										
Summer On-Peak Period										\$0.05935 (R)
Summer Mid-Peak Period										\$0.01310 (R)
Winter All Other										\$0.00087 (R)
EVCCR Reduction Rate per kWh (See note 12)										
Summer EV Recharge Period										(\$0.00005)
Winter EV Recharge Period										(\$0.00057)
EVCCR Demand Rate Reduction per kW (See note 12)										
Summer On-Peak Period										(\$7.69) (I)
Summer Mid-Peak Period										(\$1.59) (I)
Winter All Other										(\$0.36) (I)
<b>Primary Distribution Voltage</b>										
Basic Service Charge, per month										\$207.70
Consumption Charge per kWh										
Summer On-Peak Period	\$0.03817	\$0.07960	\$0.01500	\$0.00057	\$0.00077	\$0.00039	\$0.00142	\$0.00002	\$0.00117	\$0.13711 (I)
Summer Mid-Peak Period	\$0.01763	\$0.07980	\$0.01500	\$0.00057	\$0.00077	\$0.00039	\$0.00142	\$0.00002	\$0.00117	\$0.11657 (I)
Summer Off-Peak Period	\$0.00107	\$0.07960	\$0.01500	\$0.00057	\$0.00077	\$0.00039	\$0.00142	\$0.00002	\$0.00117	\$0.10001 (I)
Winter All Other	\$0.00464	\$0.07980	\$0.01500	\$0.00057	\$0.00077	\$0.00039	\$0.00142	\$0.00002	\$0.00117	\$0.10358 (I)
Demand Charge per kW										
Summer On-Peak Period										\$10.59
Summer Mid-Peak Period										\$2.47
Winter All Other										\$0.60
Facilities Charge all kW per kW										\$2.34
Meter Charge per additional meter per month										\$65.00
EVCCR (Electric Vehicle Commercial Charging Rider)										
Consumption Charge per kWh										
Summer EV Recharge Period	\$0.00107	\$0.07960	\$0.01500	\$0.00057	\$0.00077	\$0.00039	\$0.00142	\$0.00002	\$0.00117	\$0.10001 (I)
Winter EV Recharge Period	\$0.00464	\$0.07980	\$0.01500	\$0.00057	\$0.00077	\$0.00039	\$0.00142	\$0.00002	\$0.00117	\$0.10358 (I)
EVCCR BTGR Transition Rate per kWh (See note 12)										
Summer On-Peak Period										\$0.04688 (R)
Summer Mid-Peak Period										\$0.01123 (R)
Winter All Other										\$0.00077 (R)
(Continued)										
Issued:	02-15-23	Issued By:								
Effective:	04-01-23	Janet Wells								
Notice No.:	23-01	Vice President, Regulatory								
Advice No.:										



NEVADA POWER COMPANY dba NV Energy  
P.O. Box 98910  
Las Vegas, NV 89151-0001  
Tariff No. 1-B  
Cancels  
Tariff No. 1-A (withdrawn)

Cancelling 90 th Revised  
89 th Revised

PUCN Sheet No 10C  
PUCN Sheet No 10C

<b>STATEMENT OF RATES</b>										
<b>EFFECTIVE RATES APPLICABLE TO NEVADA POWER COMPANY</b>										
<b>ELECTRIC SCHEDULES</b>										
<b>Bundled Rates</b>										
(Continued)										
PUBLIC POLICY RATES										
Schedule Number & Type of Charge	BTGR	BTER	DEAA	TRED	REPR	UEC	NDPP	ESAP	EE	Total Rate
<b>LGS-2- Large General Service - 2 (Continued)</b>										
<b>Primary Distribution Voltage (Continued)</b>										
EVCCR Reduction Rate per kWh (See note 12)										
Summer EV Recharge Period										(\$0.00011)
Winter EV Recharge Period										(\$0.00046)
EVCCR Demand Rate Reduction per kW (See note 12)										
Summer On-Peak Period										(\$6.35) (I)
Summer Mid-Peak Period										(\$1.48) (I)
Winter All Other										(\$0.36) (I)
<b>Transmission Voltage</b>										
Basic Service Charge, per month										\$182.00
Consumption Charge per kWh										
Summer On-Peak Period	\$0.04425	\$0.07960	\$0.01500	\$0.00057	\$0.00077	\$0.00039	\$0.00142	\$0.00002	\$0.00101	\$0.14303 (I)
Summer Mid-Peak Period	\$0.00766	\$0.07960	\$0.01500	\$0.00057	\$0.00077	\$0.00039	\$0.00142	\$0.00002	\$0.00101	\$0.10844 (I)
Summer Off-Peak Period	\$0.00001	\$0.07960	\$0.01500	\$0.00057	\$0.00077	\$0.00039	\$0.00142	\$0.00002	\$0.00101	\$0.09879 (I)
Winter All Other	\$0.00066	\$0.07960	\$0.01500	\$0.00057	\$0.00077	\$0.00039	\$0.00142	\$0.00002	\$0.00101	\$0.09944 (I)
Demand Charge per kW										
Summer On-Peak Period										\$11.46
Summer Mid-Peak Period										\$2.67
Winter All Other										\$0.75
Facilities Charge per dollar of Utility Investment (See note 14)										
Facilities Charge per dollar of Contributed Investment (See note 14)										
Or, Facilities Charge, Per kW of Maximum Demand										
										\$0.00313
										\$0.00057
										\$0.61
Meter Charge per additional meter per month										
										\$23.00
EVCCR (Electric Vehicle Commercial Charging Rider)										
Consumption Charge per kWh										
Summer EV Recharge Period	\$0.00001	\$0.07960	\$0.01500	\$0.00057	\$0.00077	\$0.00039	\$0.00142	\$0.00002	\$0.00101	\$0.09879 (I)
Winter EV Recharge Period	\$0.00066	\$0.07960	\$0.01500	\$0.00057	\$0.00077	\$0.00039	\$0.00142	\$0.00002	\$0.00101	\$0.09944 (I)
EVCCR BTGR Transition Rate per kWh (See note 12)										
Summer On-Peak Period										\$0.02655 (R)
Summer Mid-Peak Period										\$0.00460 (R)
Winter All Other										\$0.00040 (R)
EVCCR Reduction Rate per kWh (See note 12)										
Summer EV Recharge Period										\$0.00000
Winter EV Recharge Period										(\$0.00007)
EVCCR Demand Rate Reduction per kW (See note 12)										
Summer On-Peak Period										(\$6.88) (I)
Summer Mid-Peak Period										(\$1.60) (I)
Winter All Other										(\$0.45) (I)
<b>LGS-3 - Large General Service - 3</b>										
<b>Secondary Distribution Voltage</b>										
Basic Service Charge, per month										
										\$122.00
Consumption Charge per kWh										
Summer On-Peak Period	\$0.03591	\$0.07960	\$0.01500	\$0.00057	\$0.00077	\$0.00039	\$0.00142	\$0.00002	\$0.00130	\$0.13498 (I)
Summer Mid-Peak Period	\$0.01718	\$0.07960	\$0.01500	\$0.00057	\$0.00077	\$0.00039	\$0.00142	\$0.00002	\$0.00130	\$0.11625 (I)
(Continued)										
Issued	02-15-23	Issued By:				<div style="border: 1px solid black; padding: 10px; width: fit-content; margin: auto;"> <p style="text-align: center;">Filing Accepted Effective</p> <div style="border: 1px solid black; padding: 5px; margin: 5px auto; width: 80%;"> <p style="text-align: center; font-size: 1.2em; font-weight: bold;">APR 01 2023</p> </div> <p style="text-align: center; font-size: 0.8em;">Public Utilities Commission of Nevada</p> </div>				
Effective	04-01-23	Janet Wells								
Notice No.: Advice No.:	23-01	Vice President, Regulatory								

NEVADA POWER COMPANY dba NV Energy  
P.O. Box 98910  
Las Vegas, NV 89151-0001  
Tariff No. 1-B  
Cancels  
Tariff No. 1-A (withdrawn)

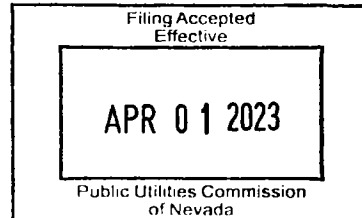
Cancelling 21 st Revised  
20 th Revised

PUCN Sheet No 10C(1)  
PUCN Sheet No 10C(1)

<b>STATEMENT OF RATES</b>											
<b>EFFECTIVE RATES APPLICABLE TO NEVADA POWER COMPANY</b>											
<b>ELECTRIC SCHEDULES</b>											
<b>Bundled Rates</b>											
(Continued)											
<b>PUBLIC POLICY RATES</b>											
Schedule Number & Type of Charge	BTGR	BTER	DEAA	TRED	REPR	UEC	NDPP	ESAP	EE	Total Rate	
<b>LGS-3 – Large General Service – 3 (Continued)</b>											
<b>Secondary Distribution Voltage (Continued)</b>											
Summer Off-Peak Period	\$0.00130	\$0.07960	\$0.01500	\$0.00057	\$0.00077	\$0.00039	\$0.00142	\$0.00002	\$0.00130	\$0.10037	(I)
Winter All Other	\$0.00483	\$0.07960	\$0.01500	\$0.00057	\$0.00077	\$0.00039	\$0.00142	\$0.00002	\$0.00130	\$0.10390	(I)
Demand Charge per kW											
Summer On-Peak Period										\$12.44	
Summer Mid-Peak Period										\$3.00	
Winter All Other										\$0.80	
Facilities Charge all kW per kW										\$2.82	
Meter Charge per additional meter per month										\$3.00	
<b>EVCCR (Electric Vehicle Commercial Charging Rider)</b>											
<b>Consumption Charge per kWh</b>											
Summer EV Recharge Period	\$0.00130	\$0.07960	\$0.01500	\$0.00057	\$0.00077	\$0.00039	\$0.00142	\$0.00002	\$0.00130	\$0.10037	(I)
Winter EV Recharge Period	\$0.00483	\$0.07960	\$0.01500	\$0.00057	\$0.00077	\$0.00039	\$0.00142	\$0.00002	\$0.00130	\$0.10390	(I)
<b>EVCCR BTGR Transition Rate per kWh (See note 12)</b>											
Summer On-Peak Period										\$0.05507	(R)
Summer Mid-Peak Period										\$0.01370	(R)
Winter All Other										\$0.00098	(R)
<b>EVCCR Reduction Rate per kWh (See note 12)</b>											
Summer EV Recharge Period										(\$0.00013)	
Winter EV Recharge Period										(\$0.00048)	
<b>EVCCR Demand Rate Reduction per kW (See note 12)</b>											
Summer On-Peak Period										(\$7.46)	(I)
Summer Mid-Peak Period										(\$1.80)	(I)
Winter All Other										(\$0.48)	(I)
<b>Primary Distribution Voltage</b>											
Basic Service Charge, per month										\$214.10	
<b>Consumption Charge per kWh</b>											
Summer On-Peak Period	\$0.03856	\$0.07960	\$0.01500	\$0.00057	\$0.00077	\$0.00039	\$0.00142	\$0.00002	\$0.00145	\$0.13778	(I)
Summer Mid-Peak Period	\$0.01300	\$0.07960	\$0.01500	\$0.00057	\$0.00077	\$0.00039	\$0.00142	\$0.00002	\$0.00145	\$0.11222	(I)
Summer Off-Peak Period	\$0.00116	\$0.07960	\$0.01500	\$0.00057	\$0.00077	\$0.00039	\$0.00142	\$0.00002	\$0.00145	\$0.10038	(I)
Winter All Other	\$0.00279	\$0.07960	\$0.01500	\$0.00057	\$0.00077	\$0.00039	\$0.00142	\$0.00002	\$0.00145	\$0.10201	(I)
Demand Charge per kW											
Summer On-Peak Period										\$13.61	
Summer Mid-Peak Period										\$3.36	
Winter All Other										\$0.85	
Facilities Charge all kW per kW										\$2.73	
Meter Charge per additional meter per month										\$76.25	
<b>EVCCR (Electric Vehicle Commercial Charging Rider)</b>											
<b>Consumption Charge per kWh</b>											
Summer EV Recharge Period	\$0.00116	\$0.07960	\$0.01500	\$0.00057	\$0.00077	\$0.00039	\$0.00142	\$0.00002	\$0.00145	\$0.10038	(I)
Winter EV Recharge Period	\$0.00279	\$0.07960	\$0.01500	\$0.00057	\$0.00077	\$0.00039	\$0.00142	\$0.00002	\$0.00145	\$0.10201	(I)
(Continued)											

Issued: **02-15-23**  
Effective: **04-01-23**  
Notice No.: **23-01**  
Advice No.:

Issued By:  
**Janet Wells**  
Vice President, Regulatory



NEVADA POWER COMPANY dba NV Energy  
P.O. Box 98910  
Las Vegas, NV 89151-0001  
Tariff No. 1-B

Cancels

Tariff No. 1-A (withdrawn)

Cancelling 90 th Revised  
89 th Revised

PUCN Sheet No 10D  
PUCN Sheet No 10D

<b>STATEMENT OF RATES</b>										
<b>EFFECTIVE RATES APPLICABLE TO NEVADA POWER COMPANY</b>										
<b>ELECTRIC SCHEDULES</b>										
<b>Bundled Rates</b>										
(Continued)										
PUBLIC POLICY RATES										
Schedule Number & Type of Charge	BTGR	BTER	DEAA	TRED	REPR	UEC	NDPP	ESAP	EE	Total Rate
<b>LGS-3 - Large General Service - 3 (Continued)</b>										
<b>Primary Distribution Voltage (Continued)</b>										
EVCCR BTGR Transition Rate per kWh (See note 12)										
Summer On-Peak Period										\$0.05957 (R)
Summer Mid-Peak Period										\$0.01547 (R)
Winter All Other										\$0.00105 (R)
EVCCR Reduction Rate per kWh (See note 12)										
Summer EV Recharge Period										(\$0.00012)
Winter EV Recharge Period										(\$0.00028)
EVCCR Demand Rate Reduction per kW (See note 12)										
Summer On-Peak Period										(\$8.17) (I)
Summer Mid-Peak Period										(\$2.02) (I)
Winter All Other										(\$0.51) (I)
<b>Transmission Voltage</b>										
Basic Service Charge, per month										\$182.00
Consumption Charge per kWh										
Summer On-Peak Period	\$0.04425	\$0.07980	\$0.01500	\$0.00057	\$0.00077	\$0.00039	\$0.00142	\$0.00002	\$0.00107	\$0.14309 (I)
Summer Mid-Peak Period	\$0.00766	\$0.07980	\$0.01500	\$0.00057	\$0.00077	\$0.00039	\$0.00142	\$0.00002	\$0.00107	\$0.10650 (I)
Summer Off-Peak Period	\$0.00001	\$0.07980	\$0.01500	\$0.00057	\$0.00077	\$0.00039	\$0.00142	\$0.00002	\$0.00107	\$0.09885 (I)
Winter All Other	\$0.00086	\$0.07980	\$0.01500	\$0.00057	\$0.00077	\$0.00039	\$0.00142	\$0.00002	\$0.00107	\$0.09950 (I)
Demand Charge per kW										
Summer On-Peak Period										\$11.48
Summer Mid-Peak Period										\$2.67
Winter All Other										\$0.75
Facilities Charge per dollar of Utility Investment (See note 14)										
Facilities Charge per dollar of Contributed Investment (See note 14)										
Or, Facilities Charge, Per kW of Maximum Demand										
										\$0.00313
										\$0.00057
										\$0.61
Meter Charge per additional meter per month										
										\$23.00
EVCCR (Electric Vehicle Commercial Charging Rider)										
Consumption Charge per kWh										
Summer EV Recharge Period	\$0.00001	\$0.07980	\$0.01500	\$0.00057	\$0.00077	\$0.00039	\$0.00142	\$0.00002	\$0.00107	\$0.09885 (I)
Winter EV Recharge Period	\$0.00066	\$0.07980	\$0.01500	\$0.00057	\$0.00077	\$0.00039	\$0.00142	\$0.00002	\$0.00107	\$0.09950 (I)
EVCCR BTGR Transition Rate per kWh (See note 12)										
Summer On-Peak Period										\$0.04319 (R)
Summer Mid-Peak Period										\$0.01037 (R)
Winter All Other										\$0.00081 (R)
EVCCR Reduction Rate per kWh (See note 12)										
Summer EV Recharge Period										\$0.00000
Winter EV Recharge Period										(\$0.00007)
EVCCR Demand Rate Reduction per kW (See note 12)										
Summer On-Peak Period										(\$6.88) (I)
Summer Mid-Peak Period										(\$1.60) (I)
Winter All Other										(\$0.45) (I)
(Continued)										
Issued.	02-15-23		Issued By:							
Effective.	04-01-23		Janet Wells							
Notice No.	23-01		Vice President, Regulatory							
Advice No.:										
<div style="border: 1px solid black; padding: 10px; width: fit-content; margin: auto;"> <p style="text-align: center;">Filing Accepted Effective</p> <div style="border: 1px solid black; padding: 5px; text-align: center; font-size: 24px; font-weight: bold;">APR 01 2023</div> <p style="text-align: center;">Public Utilities Commission of Nevada</p> </div>										

NEVADA POWER COMPANY dba NV Energy  
P.O. Box 98910  
Las Vegas, NV 89151-0001  
Tariff No. 1-B  
Cancels  
Tariff No. 1-A (withdrawn)

Cancelling 89 th Revised  
88 th Revised

PUCN Sheet No. 10E  
PUCN Sheet No. 10E

<b>STATEMENT OF RATES</b>										
<b>EFFECTIVE RATES APPLICABLE TO NEVADA POWER COMPANY</b>										
<b>ELECTRIC SCHEDULES</b>										
<b>Bundled Rates</b>										
(Continued)										
PUBLIC POLICY RATES										
Schedule Number & Type of Charge	BTGR	BTER	DEAA	TRED	REPR	UEC	NDPP	ESAP	EE	Total Rate
<b>OLGS-3P-HLF - Optional Large General Service - High Load Factor (See Note 16)</b>										
<b>Primary Distribution</b>										
Basic Service Charge, per month										\$214.10
Consumption Charge per kWh										
Summer On-Peak Period	\$0.01088	\$0.07960	\$0.01500	\$0.00057	\$0.00077	\$0.00039	\$0.00142	\$0.00002	\$0.00145	\$0.11010 (l)
Summer Mid-Peak Period	\$0.00096	\$0.07960	\$0.01500	\$0.00057	\$0.00077	\$0.00039	\$0.00142	\$0.00002	\$0.00145	\$0.10018 (l)
Summer Off-Peak Period	\$0.00043	\$0.07960	\$0.01500	\$0.00057	\$0.00077	\$0.00039	\$0.00142	\$0.00002	\$0.00145	\$0.09965 (l)
Winter All Other	\$0.00044	\$0.07960	\$0.01500	\$0.00057	\$0.00077	\$0.00039	\$0.00142	\$0.00002	\$0.00145	\$0.09966 (l)
Demand Charge per kW										
Summer On-Peak Period										\$20.79
Summer Mid-Peak Period										\$5.63
Summer Off-Peak Period										\$0.00
Winter All Other										\$0.90
Facilities Charge per dollar of Utility Investment (See note 14)										\$0.00313
Facilities Charge per dollar of Contributed Investment (See note 14)										\$0.00057
And, Facilities Charge, Per kW of Maximum Demand										\$1.06
Meter Charge per additional meter per month										\$76.25
<b>LGS-X - Large General Service - Extra Large (See Note 17, 18 and 19)</b>										
<b>Secondary Distribution Voltage</b>										
Basic Service Charge, per month										\$4,743.00
Consumption Charge per kWh										
Summer On-Peak Period	\$0.03591	\$0.07960	\$0.01500	\$0.00057	\$0.00077	\$0.00039	\$0.00142	\$0.00002	\$0.00145	\$0.13513 (l)
Summer Mid-Peak Period	\$0.01718	\$0.07960	\$0.01500	\$0.00057	\$0.00077	\$0.00039	\$0.00142	\$0.00002	\$0.00145	\$0.11640 (l)
Summer Off-Peak Period	\$0.00130	\$0.07960	\$0.01500	\$0.00057	\$0.00077	\$0.00039	\$0.00142	\$0.00002	\$0.00145	\$0.10052 (l)
Winter All Other	\$0.00483	\$0.07960	\$0.01500	\$0.00057	\$0.00077	\$0.00039	\$0.00142	\$0.00002	\$0.00145	\$0.10405 (l)
Demand Charge per kW										
Summer On-Peak Period										\$12.44
Summer Mid-Peak Period										\$3.00
Winter All Other										\$0.80
Facilities Charge all kW per kW										\$0.91
Meter Charge per additional meter per month										\$20.52
<b>Primary Distribution Voltage</b>										
Basic Service Charge, per month										\$4,743.00
Consumption Charge per kWh										
Summer On-Peak Period	\$0.03856	\$0.07960	\$0.01500	\$0.00057	\$0.00077	\$0.00039	\$0.00142	\$0.00002	\$0.00161	\$0.13794 (l)
Summer Mid-Peak Period	\$0.01300	\$0.07960	\$0.01500	\$0.00057	\$0.00077	\$0.00039	\$0.00142	\$0.00002	\$0.00161	\$0.11238 (l)
Summer Off-Peak Period	\$0.00116	\$0.07960	\$0.01500	\$0.00057	\$0.00077	\$0.00039	\$0.00142	\$0.00002	\$0.00161	\$0.10054 (l)
Winter All Other	\$0.00279	\$0.07960	\$0.01500	\$0.00057	\$0.00077	\$0.00039	\$0.00142	\$0.00002	\$0.00161	\$0.10217 (l)
Demand Charge per kW										
Summer On-Peak Period										\$13.61
Summer Mid-Peak Period										\$3.36
Winter All Other										\$0.85
Facilities Charge all kW per kW										\$1.63
Meter Charge per additional meter per month										\$86.85

(Continued)

Issued	02-15-23	Issued By:	<div style="border: 1px solid black; padding: 5px; width: fit-content; margin: 0 auto;"> <p>Filing Accepted Effective</p> <div style="border: 1px solid black; padding: 10px; width: 100px; text-align: center; margin: 0 auto;"> <p><b>APR 01 2023</b></p> </div> <p>Public Utilities Commission of Nevada</p> </div>
Effective	04-01-23	Janet Wells	
Notice No.: Advice No.:	23-01	Vice President, Regulatory	

NEVADA POWER COMPANY dba NV Energy  
P.O. Box 98910  
Las Vegas, NV 89151-0001  
Tariff No. 1-B  
Cancels  
Tariff No. 1-A (withdrawn)

Cancelling 88 th Revised  
87 th Revised

PUCN Sheet No 10F  
PUCN Sheet No 10F

**STATEMENT OF RATES**  
**EFFECTIVE RATES APPLICABLE TO NEVADA POWER COMPANY**

**ELECTRIC SCHEDULES**

**Bundled Rates**

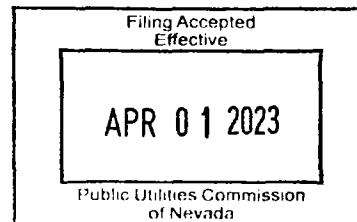
(Continued)

Schedule Number & Type of Charge	BTGR	BTER	DEAA	PUBLIC POLICY RATES						EE	Total Rate
				TRED	REPR	UEC	NDPP	ESAP			
<b>LGS-X - Large General Service - Extra Large (Continued)</b>											
<b>Transmission Voltage</b>											
Basic Service Charge, per month											\$4,743 00
Consumption Charge per kWh											
Summer On-Peak Period	\$0.04425	\$0.07960	\$0.01500	\$0.00057	\$0.00077	\$0.00039	\$0.00142	\$0.00002	\$0.00124	\$0.14326	(1)
Summer Mid-Peak Period	\$0.00766	\$0.07960	\$0.01500	\$0.00057	\$0.00077	\$0.00039	\$0.00142	\$0.00002	\$0.00124	\$0.10667	(1)
Summer Off-Peak Period	\$0.00001	\$0.07960	\$0.01500	\$0.00057	\$0.00077	\$0.00039	\$0.00142	\$0.00002	\$0.00124	\$0.09902	(1)
88	\$0.00066	\$0.07960	\$0.01500	\$0.00057	\$0.00077	\$0.00039	\$0.00142	\$0.00002	\$0.00124	\$0.09967	(1)
Demand Charge per kW											
Summer On-Peak Period										\$11.46	
Summer Mid-Peak Period										\$2.67	
Winter All Other										\$0.75	
Facilities Charge all kW per kW										\$0.00	
Meter Charge per additional meter per month										\$139 05	
<b>LGS-WP-2 - Large General Service - Water Pumping - 2</b>											
<b>Secondary Distribution Voltage</b>											
Basic Service Charge, per month										\$128 70	
Consumption Charge per kWh											
Summer On-Peak Period	\$0.00010	\$0.07960	\$0.01500	\$0.00057	\$0.00077	\$0.00039	\$0.00142	\$0.00002	\$0.00141	\$0.09928	(1)
Summer Mid-Peak Period	\$0.00010	\$0.07960	\$0.01500	\$0.00057	\$0.00077	\$0.00039	\$0.00142	\$0.00002	\$0.00141	\$0.09928	(1)
Summer Off-Peak Period	\$0.00001	\$0.07960	\$0.01500	\$0.00057	\$0.00077	\$0.00039	\$0.00142	\$0.00002	\$0.00141	\$0.09919	(1)
Winter All Other	\$0.00002	\$0.07960	\$0.01500	\$0.00057	\$0.00077	\$0.00039	\$0.00142	\$0.00002	\$0.00141	\$0.09920	(1)
Demand Charge per kW (During hours of curtailment)											
Summer On and Mid-Peak Period										\$15 46	
Winter All Other										\$0.60	
Facilities Charge all kW per kW										\$0.80	
Meter Charge per additional meter per month										\$9.75	

(Continued)

Issued: 02-15-23  
Effective: 04-01-23  
Notice No.: 23-01  
Advice No.:

Issued By:  
Janet Wells  
Vice President, Regulatory



NEVADA POWER COMPANY dba NV Energy  
P.O. Box 98910  
Las Vegas, NV 89151-0001  
Tariff No. 1-B  
Cancels  
Tariff No. 1-A (withdrawn)

88 th Revised  
Cancelling 87 th Revised

PUCN Sheet No 10G  
PUCN Sheet No 10G

<b>STATEMENT OF RATES</b>											
<b>EFFECTIVE RATES APPLICABLE TO NEVADA POWER COMPANY</b>											
<b>ELECTRIC SCHEDULES</b>											
<b>Bundled Rates</b>											
(Continued)											
Schedule Number & Type of Charge	BTGR	BTER	DEAA	PUBLIC POLICY RATES						EE	Total Rate
				TRED	REPR	UEC	NDPP	ESAP			
<b>LGS-WP-2 - Large General Service - Water Pumping - 2 (Continued)</b>											
<b>Primary Distribution Voltage</b>											
Basic Service Charge, per month										\$208.60	
Consumption Charge per kWh											
Summer On-Peak Period	\$0.05587	\$0.07960	\$0.01500	\$0.00057	\$0.00077	\$0.00039	\$0.00142	\$0.00002	\$0.00103	\$0.15467 (I)	
Summer Mid-Peak Period	\$0.09974	\$0.07960	\$0.01500	\$0.00057	\$0.00077	\$0.00039	\$0.00142	\$0.00002	\$0.00103	\$0.19854 (I)	
Summer Off-Peak Period	\$0.00104	\$0.07960	\$0.01500	\$0.00057	\$0.00077	\$0.00039	\$0.00142	\$0.00002	\$0.00103	\$0.09984 (I)	
Winter All Other	\$0.00105	\$0.07960	\$0.01500	\$0.00057	\$0.00077	\$0.00039	\$0.00142	\$0.00002	\$0.00103	\$0.09985 (I)	
Demand Charge per kW (During hours of curtailment)											
Summer On and Mid-Peak Period										\$13.08	
Winter All Other										\$0.60	
Facilities Charge all kW per kW										\$1.17	
Meter Charge per additional meter per month										\$65.00	
<b>Transmission Voltage</b>											
Basic Service Charge, per month										\$169.10	
Consumption Charge per kWh											
Summer On-Peak Period	\$0.05435	\$0.07960	\$0.01500	\$0.00057	\$0.00077	\$0.00039	\$0.00142	\$0.00002	\$0.00103	\$0.15315 (I)	
Summer Mid-Peak Period	\$0.10098	\$0.07960	\$0.01500	\$0.00057	\$0.00077	\$0.00039	\$0.00142	\$0.00002	\$0.00103	\$0.19978 (I)	
Summer Off-Peak Period	\$0.00117	\$0.07960	\$0.01500	\$0.00057	\$0.00077	\$0.00039	\$0.00142	\$0.00002	\$0.00103	\$0.09997 (I)	
Winter All Other	\$0.00117	\$0.07960	\$0.01500	\$0.00057	\$0.00077	\$0.00039	\$0.00142	\$0.00002	\$0.00103	\$0.09997 (I)	
Demand Charge per kW (During hours of curtailment)											
Summer On and Mid-Peak Period										\$14.13	
Winter All Other										\$0.75	
Facilities Charge per dollar of Utility Investment (See note 14)										\$0.00313	
Facilities Charge per dollar of Contributed Investment (See note 14)										\$0.00057	
Or, Facilities Charge, Per kW of Maximum Demand										\$0.61	
Meter Charge per additional meter per month										\$0.00	

(Continued)

Issued: <b>02-15-23</b>  Effective: <b>04-01-23</b>  Notice No.: Advice No.: <b>23-01</b>	<b>Issued By:</b>  <b>Janet Wells</b>  <b>Vice President, Regulatory</b>	<div style="border: 1px solid black; padding: 10px;"> <p>Filing Accepted Effective</p> <div style="border: 1px solid black; padding: 5px; margin: 10px auto; width: 80%;"> <p style="font-size: 24px; font-weight: bold;">APR 01 2023</p> </div> <p>Public Utilities Commission of Nevada</p> </div>
--	--	--

NEVADA POWER COMPANY dba NV Energy  
P.O. Box 98910  
Las Vegas, NV 89151-0001  
Tariff No. 1-B  
Cancels  
Tariff No. 1-A (withdrawn)

Cancelling 88 th Revised  
87 th Revised

PUCN Sheet No. 10H  
PUCN Sheet No. 10H

<b>STATEMENT OF RATES</b>										
<b>EFFECTIVE RATES APPLICABLE TO NEVADA POWER COMPANY</b>										
<b>ELECTRIC SCHEDULES</b>										
<b>Bundled Rates</b>										
(Continued)										
Schedule Number & Type of Charge	BTGR	BTER	DEAA	PUBLIC POLICY RATES						Total Rate
				TRED	REPR	UEC	NDPP	ESAP	EE	
<b>LGS-WP-3 - Large General Service - Water Pumping - 3</b>										
<b>Secondary Distribution Voltage</b>										
Basic Service Charge, per month										\$149.90
Consumption Charge per kWh										
Summer On-Peak Period	\$0.00010	\$0.07960	\$0.01500	\$0.00057	\$0.00077	\$0.00039	\$0.00142	\$0.00002	\$0.00068	\$0.09855 (1)
Summer Mid-Peak Period	\$0.00010	\$0.07960	\$0.01500	\$0.00057	\$0.00077	\$0.00039	\$0.00142	\$0.00002	\$0.00068	\$0.09855 (1)
Summer Off-Peak Period	\$0.00001	\$0.07960	\$0.01500	\$0.00057	\$0.00077	\$0.00039	\$0.00142	\$0.00002	\$0.00068	\$0.09846 (1)
Winter All Other	\$0.00002	\$0.07960	\$0.01500	\$0.00057	\$0.00077	\$0.00039	\$0.00142	\$0.00002	\$0.00068	\$0.09847 (1)
Demand Charge per kW (During hours of curtailment)										
Summer On and Mid-Peak Period										\$15.44
Winter All Other										\$0.80
Facilities Charge all kW per kW										\$0.45
Meter Charge per additional meter per month										\$3.00
<b>Primary Distribution Voltage</b>										
Basic Service Charge, per month										\$234.20
Consumption Charge per kWh										
Summer On-Peak Period	\$0.03723	\$0.07960	\$0.01500	\$0.00057	\$0.00077	\$0.00039	\$0.00142	\$0.00002	\$0.00085	\$0.13585 (1)
Summer Mid-Peak Period	\$0.06984	\$0.07960	\$0.01500	\$0.00057	\$0.00077	\$0.00039	\$0.00142	\$0.00002	\$0.00085	\$0.16846 (1)
Summer Off-Peak Period	\$0.00080	\$0.07960	\$0.01500	\$0.00057	\$0.00077	\$0.00039	\$0.00142	\$0.00002	\$0.00085	\$0.09942 (1)
Winter All Other	\$0.00081	\$0.07960	\$0.01500	\$0.00057	\$0.00077	\$0.00039	\$0.00142	\$0.00002	\$0.00085	\$0.09943 (1)
Demand Charge per kW (During hours of curtailment)										
Summer On and Mid-Peak Period										\$16.97
Summer Off-Peak Period										\$0.00
Winter All Other										\$0.85
Facilities Charge all kW per kW										\$0.92
Meter Charge per additional meter per month										\$76.25

(Continued)

Issued:	02-15-23	Issued By:	<div style="border: 1px solid black; padding: 5px; width: fit-content; margin: 0 auto;"> <p>Filing Accepted Effective</p> <p style="font-size: 24px; font-weight: bold;">APR 01 2023</p> <p>Public Utilities Commission of Nevada</p> </div>
Effective:	04-01-23	Janet Wells	
Notice No.:	23-01	Vice President, Regulatory	
Advice No.:			



NEVADA POWER COMPANY dba NV Energy  
P.O. Box 98910  
Las Vegas, NV 89151-0001  
Tariff No. 1-B  
Cancels  
Tariff No. 1-A (withdrawn)

Cancelling 113 th Revised  
112 th Revised

PUCN Sheet No. 10I  
PUCN Sheet No. 10I

**STATEMENT OF RATES**  
**EFFECTIVE RATES APPLICABLE TO NEVADA POWER COMPANY**  
**ELECTRIC SCHEDULES**

**Bundled Rates**  
(Continued)

Schedule Number & Type of Charge	BTGR	BTER	DEAA	PUBLIC POLICY RATES						Total Rate	
				TRED	REPR	UEC	NDPP	ESAP	EE		
<b>LGS-WP-3 - Large General Service - Water Pumping - 3 (Continued)</b>											
<b>Transmission Voltage</b>											
Basic Service Charge, per month										\$189.10	
Consumption Charge per kWh											
Summer On-Peak Period	\$0.03622	\$0.07960	\$0.01500	\$0.00057	\$0.00077	\$0.00039	\$0.00142	\$0.00002	\$0.00085	\$0.13484	(1)
Summer Mid-Peak Period	\$0.07071	\$0.07960	\$0.01500	\$0.00057	\$0.00077	\$0.00039	\$0.00142	\$0.00002	\$0.00085	\$0.18933	(1)
Summer Off-Peak Period	\$0.00089	\$0.07960	\$0.01500	\$0.00057	\$0.00077	\$0.00039	\$0.00142	\$0.00002	\$0.00085	\$0.09951	(1)
Winter All Other	\$0.00090	\$0.07960	\$0.01500	\$0.00057	\$0.00077	\$0.00039	\$0.00142	\$0.00002	\$0.00085	\$0.09952	(1)
Demand Charge per kW (During hours of curtailment)											
Summer On and Mid-Peak Period										\$17.42	
Winter All Other										\$0.85	
Facilities Charge per dollar of Utility investment (See note 14)										\$0.00313	
Facilities Charge per dollar of Contributed investment (See note 14)										\$0.00057	
Or, Facilities Charge, Per kW of Maximum Demand										\$0.61	
Meter Charge per additional meter per month										\$23.00	
<b>IAWP - Interruptible Agricultural Irrigation Water Pumping</b>											
<b>March 1 to October 31</b>											
Interruptible Irrigation Rate -											
Consumption Charge per kWh	\$0.00000	\$0.06751	\$0.00000	\$0.00000	\$0.00000	\$0.00039	\$0.00142	\$0.00002	\$0.00000	\$0.06934	
(See note 20)											
<b>November 1 to February 28 (February 29 in leap years)</b>											
Interruptible Irrigation Rate -											
Basic Service Charge, per customer										\$15.80	
Consumption Charge per kWh	\$0.00578	\$0.07960	\$0.01500	\$0.00057	\$0.00077	\$0.00039	\$0.00142	\$0.00002	\$0.00145	\$0.10500	(1)
Demand Charge per kW										\$0.26	
Facilities Charge, All kW per kW										\$3.68	
Meter Charge per additional meter per month										\$6.25	
<b>ESER - Expanded Solar Energy Rate</b>											
(in addition to other rates and assessments paid by the Customer)											
Consumption Charge per kWh											
Residential ESER (see note 10)										\$0.07903	(1)
Non-Residential ESER (see note 10)										\$0.07409	(1)
ESER LID (see note 11)										\$0.07903	(1)

(Continued)

Issued:	02-15-23	Issued By:	
Effective	04-01-23	Janet Wells	
Notice No :	23-01	Vice President, Regulatory	
Advice No.:			

Filing Accepted  
Effective

APR 01 2023

Public Utilities Commission  
of Nevada

NEVADA POWER COMPANY dba NV Energy  
P.O. Box 98910  
Las Vegas, NV 89151-0001  
Tariff No. 1-B

Cancels

Tariff No. 1-A (withdrawn)

Cancelling 81 st Revised  
80 th Revised

PUCN Sheet No. 10J  
PUCN Sheet No. 10J

**STATEMENT OF RATES**  
**EFFECTIVE RATES APPLICABLE TO NEVADA POWER COMPANY**  
**ELECTRIC SCHEDULES**  
**Bundled Rates**

Schedule Number & Type of Charge	BTGR	BTER	DEAA	PUBLIC POLICY RATES					EE	Total Rate	
				TRED	REPR	UEC	NDPP	ESAP			
<b>WCS - Wireless Communication Service</b>											
Basic Service Charge, per month										\$2.70	
Consumption Charge per month, per installed device (rate includes UEC):											
Level 1										\$6.42	(I)
Level 2										\$12.73	(I)
Level 3										\$19.23	(I)
<b>Customer Specific Distribution Only Service Charge</b>											
Non-bypassable Charge applicable to accounts granted DOS service in Docket 16-11034. (R-BTER, REPR, TRED, Regulatory assets/SB 123 cost) per kWh										\$0.00229	(I)
Non-bypassable Charge applicable to accounts granted DOS service in Docket 18-12019. (R-BTER, REPR, TRED, Regulatory assets/SB 123 cost) per kWh										\$0.00273	(I)
Non-bypassable Charge applicable to accounts granted DOS service in Docket 18-09015. (R-BTER, REPR, TRED, Regulatory assets/SB 123 cost) per kWh										\$0.00273	(I)

**Notes**

1. The charges shown above are subject to adjustments for taxes and assessments as specified in the Special Supplementary Tariff (PUCN Sheet No. 31) and Schedule MC (PUCN Sheet Nos. 9-9A.)
2. BTGR = Base Tariff General Rate.
3. BTER = Base Tariff Energy Rate
4. REPR = Renewable Energy Program Rate which includes The Solar Program, the Wind Demonstration and the Water Power Demonstration
5. DEAA = Deferred Energy Accounting Adjustment (see Schedule DEAA, PUCN Sheet No. 9B.)
6. UEC = Universal Energy Charge (see Special Condition 1 of the applicable rate schedule.)
7. TRED = Temporary Renewable Energy Development Charge
8. NDPP = Natural Disaster Protection Plan Rate (see Schedule NDPP, PUCN Sheet No. 33D(6))
9. ESAP = Expanded Solar Access Program Rate (see Schedule ESAP, PUCN Sheet No. 36Z(23))
10. ESER = Expanded Solar Energy Rate (see Schedule ESER, PUCN Sheet Nos. 36Z(21)-36Z(22))
11. ESER LID = Expanded Solar Energy Rate Low Income Discount Rate (see Schedule ESER, PUCN Sheet Nos. 36Z(21)-36Z(22))
12. Customers on EVCCR-TOU rider are subject to EVCCR BTGR Transition Rate and shall be credited with EVCCR Reduction Rate and EVCCR Demand Rate Reduction
13. The Excess Energy Credit is determined by the appropriate NMR Rider-NMR-A, NMR-G, NMR-405 See 10A(1) for the appropriate credit by Rate Class and Rider
14. These Facilities Charges apply to the customer specific utility investment and/or customer contributed investment amounts identified in the customer's applicable Rule 9 line extension agreement. The charges are updated when facilities are added, removed or during General Rate Case filings
15. Time-of-Use and Season periods are defined in the Special Conditions of the applicable rate schedule
16. All rate schedules that contain a demand billing component are also subject to the Power Factor Adjustment charge (see the Special Conditions of the applicable rate schedule.)
17. LGS-X Customers are subject to Customer specific facilities charges as identified in the schedule
18. LGS-X Customers who request a separate billing for an additional contiguous property, will be charged \$103.20 per separate bill per month.
19. For any Customer requesting less than 8 MW of standby service, A Customer specific facilities charge will be included in the contract for standby service of 8 MW or above
20. BTER rate for Interruptible Irrigation as calculated by the Regulatory Operations Staff of the Commission pursuant to NRS 704.225
21. Other charges may apply, please see the applicable rate schedule

(Continued)

Issued:	02-15-23	Issued By:		<div style="border: 1px solid black; padding: 5px;"> <p>Filing Accepted Effective</p> <div style="border: 1px solid black; padding: 10px; margin: 5px 0;"> <p align="center"><b>APR 01 2023</b></p> </div> <p>Public Utilities Commission of Nevada</p> </div>
Effective:	04-01-23	Janet Wells		
Notice No. Advice No.:	23-01	Vice President, Regulatory		

NEVADA POWER COMPANY dba NV Energy  
P.O. Box 98910  
Las Vegas, NV 89151-0001  
Tariff No. 1-B  
Cancels  
Tariff No. 1-A (withdrawn)

Cancelling 42 nd Revised  
41 st Revised

PUCN Sheet No. 10J(1)  
PUCN Sheet No. 10J(1)

**STATEMENT OF RATES**  
**EFFECTIVE RATES APPLICABLE TO NEVADA POWER COMPANY**  
**ELECTRIC SCHEDULES**

**Bundled Rates**  
(Continued)

Schedule Number & Type of Charge	NMR-G	NMR-A	405(1)	405(2)	405(3)	405(4)	
<b>RS- Residential Service</b>							
Excess Energy Credit per kWh	Banking	(\$0.08007)	(\$0.15352)	(\$0.14221)	(\$0.13090)	(\$0.12120)	(R)(R)(R)(R)(R)
<b>RM- Residential Service - Multi-Family</b>							
Excess Energy Credit per kWh		(\$0.07683)	(\$0.14584)	(\$0.13509)	(\$0.12435)	(\$0.11514)	(R)(R)(R)(R)(R)
<b>ORS-TOU - Optional Residential Service - Time-of-Use</b>							
Excess Energy Credit per kWh							
Summer On-Peak		(\$0.18426)	(\$0.38605)	(\$0.35760)	(\$0.32916)	(\$0.30477)	(R)(R)(R)(R)(R)
Summer Off-Peak		(\$0.08517)	(\$0.10824)	(\$0.09842)	(\$0.09059)	(\$0.08388)	(R)(R)(R)(R)(R)
Summer REVRR (Residential)		(\$0.08320)	(\$0.10157)	(\$0.09409)	(\$0.08660)	(\$0.08019)	(R)(R)(R)(R)(R)
Electric Vehicle Recharge Rider							
Winter All other		(\$0.08001)	(\$0.11207)	(\$0.10381)	(\$0.09555)	(\$0.08847)	(R)(R)(R)(R)(R)
Winter REVRR (Residential)		(\$0.05780)	(\$0.10681)	(\$0.09894)	(\$0.09107)	(\$0.08433)	(R)(R)(R)(R)(R)
Electric Vehicle Recharge Rider							
<b>ORS-TOU - Optional Residential Service - Time-of-Use</b>							
<b>Option A</b>							
Excess Energy Credit per kWh							
Summer On-Peak		(\$0.16955)	(\$0.35110)	(\$0.32523)	(\$0.29936)	(\$0.27718)	(R)(R)(R)(R)(R)
Summer Off-Peak		(\$0.08359)	(\$0.10295)	(\$0.09536)	(\$0.08778)	(\$0.08127)	(R)(R)(R)(R)(R)
Summer REVRR (Residential)		(\$0.08176)	(\$0.09861)	(\$0.09134)	(\$0.08407)	(\$0.07785)	(R)(R)(R)(R)(R)
Electric Vehicle Recharge Rider							
Winter All other		(\$0.05589)	(\$0.10228)	(\$0.09475)	(\$0.08721)	(\$0.08075)	(R)(R)(R)(R)(R)
Winter REVRR (Residential)		(\$0.05409)	(\$0.09801)	(\$0.09079)	(\$0.08356)	(\$0.07737)	(R)(R)(R)(R)(R)
Electric Vehicle Recharge Rider							
<b>ORS-TOU - Optional Residential Service - Time-of-Use</b>							
<b>Option B</b>							
Excess Energy Credit per kWh							
Summer On-Peak	N/A	(\$0.48111)	(\$0.44568)	(\$0.41021)	(\$0.37983)	(\$0.35110)	(R)(R)(R)(R)(R)
Summer Off-Peak	N/A	(\$0.10526)	(\$0.09750)	(\$0.08974)	(\$0.08310)	(\$0.07748)	(R)(R)(R)(R)(R)
Summer REVRR (Residential)	N/A	(\$0.10068)	(\$0.09326)	(\$0.08584)	(\$0.07948)	(\$0.07418)	(R)(R)(R)(R)(R)
Electric Vehicle Recharge Rider							
Winter All other	N/A	(\$0.10103)	(\$0.09358)	(\$0.08614)	(\$0.07976)	(\$0.07446)	(R)(R)(R)(R)(R)
Winter REVRR (Residential)	N/A	(\$0.09688)	(\$0.08974)	(\$0.08260)	(\$0.07648)	(\$0.07118)	(R)(R)(R)(R)(R)
Electric Vehicle Recharge Rider							
<b>ORM-TOU - Optional Multi-Family Residential Service - Time-of-Use</b>							
Excess Energy Credit per kWh							
Summer On-Peak		(\$0.16699)	(\$0.34503)	(\$0.31980)	(\$0.29418)	(\$0.27239)	(R)(R)(R)(R)(R)
Summer Off-Peak		(\$0.07519)	(\$0.13004)	(\$0.12046)	(\$0.11088)	(\$0.10286)	(R)(R)(R)(R)(R)
Summer RMEVRR (Residential Multi-Family)		(\$0.07222)	(\$0.12299)	(\$0.11393)	(\$0.10487)	(\$0.09710)	(R)(R)(R)(R)(R)
Electric Vehicle Recharge Rider							
Winter All other		(\$0.05814)	(\$0.10763)	(\$0.09970)	(\$0.09177)	(\$0.08497)	(R)(R)(R)(R)(R)
Winter RMEVRR (Residential Multi-Family)		(\$0.05611)	(\$0.10281)	(\$0.09524)	(\$0.08766)	(\$0.08117)	(R)(R)(R)(R)(R)
Electric Vehicle Recharge Rider							

(Continued)

Issued: <b>02-15-23</b>	Issued By:	<div style="border: 1px solid black; padding: 10px; text-align: center;"> Filing Accepted  Effective   <b>APR 01 2023</b>   Public Utilities Commission  of Nevada </div>
Effective: <b>04-01-23</b>	Janet Wells	
Notice No: <b>23-01</b> Advice No:	Vice President, Regulatory	

NEVADA POWER COMPANY dba NV Energy  
P.O. Box 98910  
Las Vegas, NV 89151-0001  
Tariff No. 1-B  
cancels  
Tariff No. 1-A (withdrawn)

Cancelling 34 th Revised  
33 rd Revised

PUCN Sheet No. 10J(2)  
PUCN Sheet No. 10J(2)

**STATEMENT OF RATES**  
**EFFECTIVE RATES APPLICABLE TO NEVADA POWER COMPANY**  
**ELECTRIC SCHEDULES**  
**Bundled Rates**  
(Continued)

Schedule Number & Type of Charge	NMR-G	NMR-A	405(1)	405(2)	405(3)	405(4)	
<b>ORM-TOU – Optional Multi-Family Residential Service – Time-of-Use (Continued)</b>							
<b>Option A</b>							
Excess Energy Credit per kWh							
Summer On-Peak	Banking	(\$0.16170)	(\$0.33246)	(\$0.30796)	(\$0.28346)	(\$0.26247)	(R)(R)(R)(R)
Summer Off-Peak		(\$0.07078)	(\$0.12003)	(\$0.11118)	(\$0.10234)	(\$0.09476)	(R)(R)(R)(R)
Summer RMEVRR (Residential Multi-Family)		(\$0.06824)	(\$0.11398)	(\$0.10558)	(\$0.09718)	(\$0.08998)	(R)(R)(R)(R)
Electric Vehicle Recharge Rider							
Winter All other		(\$0.05587)	(\$0.10223)	(\$0.09470)	(\$0.08717)	(\$0.08071)	(R)(R)(R)(R)
Winter RMEVRR (Residential Multi-Family)		(\$0.05407)	(\$0.09796)	(\$0.09074)	(\$0.08352)	(\$0.07734)	(R)(R)(R)(R)
Electric Vehicle Recharge Rider							
<b>ORM-TOU – Optional Multi-Family Residential Service – Time-of-Use</b>							
<b>Option B</b>							
Excess Energy Credit per kWh							
Summer On-Peak		N/A	(\$0.33331)	(\$0.30875)	(\$0.28419)	(\$0.26314)	(R)(R)(R)(R)
Summer Off-Peak		N/A	(\$0.15005)	(\$0.13899)	(\$0.12794)	(\$0.11846)	(R)(R)(R)(R)
Summer RMEVRR (Residential Multi-Family)		N/A	(\$0.14099)	(\$0.13061)	(\$0.12022)	(\$0.11131)	(R)(R)(R)(R)
Electric Vehicle Recharge Rider							
Winter All other		N/A	(\$0.11192)	(\$0.10368)	(\$0.09543)	(\$0.08836)	(R)(R)(R)(R)
Winter RMEVRR (Residential Multi-Family)		N/A	(\$0.10668)	(\$0.09882)	(\$0.09096)	(\$0.08422)	(R)(R)(R)(R)
Electric Vehicle Recharge Rider							
<b>LRS – Large Residential Service</b>							
Excess Energy Credit per kWh		(\$0.07695)	(\$0.14612)	(\$0.13536)	(\$0.12459)	(\$0.11536)	(R)(R)(R)(R)
<b>OLRS-TOU – Optional Large Residential Service – Time-of-Use</b>							
<b>Option A</b>							
Excess Energy Credit per kWh							
Summer On-Peak		(\$0.18274)	(\$0.38243)	(\$0.35425)	(\$0.32607)	(\$0.30192)	(R)(R)(R)(R)
Summer Off-Peak		(\$0.06827)	(\$0.11361)	(\$0.10524)	(\$0.09686)	(\$0.08969)	(R)(R)(R)(R)
Summer REVRR (Residential)		(\$0.06599)	(\$0.10820)	(\$0.10023)	(\$0.09226)	(\$0.08542)	(R)(R)(R)(R)
Electric Vehicle Recharge Rider							
Winter All other		(\$0.05981)	(\$0.11160)	(\$0.10338)	(\$0.09516)	(\$0.08811)	(R)(R)(R)(R)
Winter REVRR (Residential)		(\$0.05762)	(\$0.10640)	(\$0.09856)	(\$0.09072)	(\$0.08400)	(R)(R)(R)(R)
Electric Vehicle Recharge Rider							
<b>OLRS-TOU – Optional Large Residential Service – Time-of-Use</b>							
<b>Option B</b>							
Excess Energy Credit per kWh							
Summer On-Peak		(\$0.17363)	(\$0.36080)	(\$0.33421)	(\$0.30763)	(\$0.28484)	(R)(R)(R)(R)
Summer Off-Peak		(\$0.06438)	(\$0.10482)	(\$0.09710)	(\$0.08937)	(\$0.08275)	(R)(R)(R)(R)
Summer REVRR (Residential)		(\$0.06247)	(\$0.10029)	(\$0.09290)	(\$0.08551)	(\$0.07917)	(R)(R)(R)(R)
Electric Vehicle Recharge Rider							
Winter All other		(\$0.05695)	(\$0.10480)	(\$0.09708)	(\$0.08936)	(\$0.08274)	(R)(R)(R)(R)
Winter REVRR (Residential)		(\$0.05504)	(\$0.10027)	(\$0.09288)	(\$0.08549)	(\$0.07916)	(R)(R)(R)(R)
Electric Vehicle Recharge Rider							
<b>OLRS-TOU – Optional Large Residential Service – Time-of-Use</b>							
<b>Option B</b>							
Excess Energy Credit per kWh							
Summer On-Peak		N/A	(\$0.31772)	(\$0.29431)	(\$0.27090)	(\$0.25083)	(R)(R)(R)(R)
Summer Off-Peak		N/A	(\$0.12707)	(\$0.11770)	(\$0.10834)	(\$0.10032)	(R)(R)(R)(R)

(Continued)

Issued: **02-15-23**  
Effective: **04-01-23**  
Notice No : **23-01**  
Advice No :

Issued By:  
**Janet Wells**  
Vice President, Regulatory

Filing Accepted  
Effective  
**APR 01 2023**  
Public Utilities Commission  
of Nevada

NEVADA POWER COMPANY dba NV Energy  
P.O. Box 98910  
Las Vegas, NV 89151-0001  
Tariff No. 1-B  
cancels  
Tariff No. 1-A (withdrawn)

Cancelling 34 th Revised  
33 rd Revised

PUCN Sheet No. 10J(3)  
PUCN Sheet No. 10J(3)

**STATEMENT OF RATES**  
**EFFECTIVE RATES APPLICABLE TO NEVADA POWER COMPANY**  
**ELECTRIC SCHEDULES**  
**Bundled Rates**  
(Continued)

Schedule Number & Type of Charge	NMR-G	NMR-A	405(1)	405(2)	405(3)	405(4)		
<b>OLRS-TOU – Optional Large Residential Service – Time-of-Use (Continued)</b>								
<b>Option B</b>								
Summer REVRT (Residential)	Banking	N/A	(\$0.12031)	(\$0.11145)	(\$0.10258)	(\$0.09498)	(R)(R)(R)(R)	
Electric Vehicle Recharge Rider								
Winter All other		N/A	(\$0.10404)	(\$0.09637)	(\$0.08871)	(\$0.08214)	(R)(R)(R)(R)	
Winter REVRT (Residential)		N/A	(\$0.09958)	(\$0.09225)	(\$0.08491)	(\$0.07862)	(R)(R)(R)(R)	
Electric Vehicle Recharge Rider								
<b>GS – General Service</b>								
Excess Energy Credit per kWh			(\$0.06048)	(\$0.10699)	(\$0.09911)	(\$0.09123)	(\$0.08447)	(R)(R)(R)(R)(R)
<b>OGS-TOU – Optional General Service – Time-of-Use</b>								
Excess Energy Credit per kWh								
Summer On-Peak			(\$0.08442)	(\$0.14892)	(\$0.13794)	(\$0.12697)	(\$0.11757)	(R)(R)(R)(R)(R)
Summer Off-Peak			(\$0.06365)	(\$0.10309)	(\$0.09549)	(\$0.08790)	(\$0.08139)	(R)(R)(R)(R)(R)
Summer GSEVRT (General Service)			(\$0.06150)	(\$0.09799)	(\$0.09077)	(\$0.08355)	(\$0.07736)	(R)(R)(R)(R)(R)
Electric Vehicle Recharge Rider								
Winter All other			(\$0.05571)	(\$0.10184)	(\$0.09434)	(\$0.08684)	(\$0.08040)	(R)(R)(R)(R)(R)
Winter GSEVRT (General Service)			(\$0.05361)	(\$0.09687)	(\$0.08973)	(\$0.08259)	(\$0.07647)	(R)(R)(R)(R)(R)
Electric Vehicle Recharge Rider								
<b>ORS-DDP – Optional Residential Service – Daily Demand Pricing</b>								
Excess Energy Credit per kWh			(\$0.07066)	(\$0.13117)	(\$0.12151)	(\$0.11184)	(\$0.10356)	(R)(R)(R)(R)(R)
<b>ORS-CPP – Optional Residential Service – Critical Peak Price</b>								
Excess Energy Credit per kWh								
Critical Peak Period			(\$0.31376)	(\$0.69386)	(\$0.64273)	(\$0.59160)	(\$0.54778)	(R)(R)(R)(R)(R)
Summer On-Peak			(\$0.17155)	(\$0.35682)	(\$0.33052)	(\$0.30423)	(\$0.28170)	(R)(R)(R)(R)(R)
Summer Off-Peak			(\$0.06666)	(\$0.10979)	(\$0.10170)	(\$0.09361)	(\$0.08667)	(R)(R)(R)(R)(R)
Summer REVRT (Residential)			(\$0.06454)	(\$0.10476)	(\$0.09704)	(\$0.08932)	(\$0.08271)	(R)(R)(R)(R)(R)
Electric Vehicle Recharge Rider								
Winter All other			(\$0.05582)	(\$0.10211)	(\$0.09459)	(\$0.08706)	(\$0.08061)	(R)(R)(R)(R)(R)
Winter REVRT (Residential)			(\$0.05403)	(\$0.09785)	(\$0.09064)	(\$0.08343)	(\$0.07725)	(R)(R)(R)(R)(R)
Electric Vehicle Recharge Rider								
<b>ORS-TOU-CPP+DDP – Optional Residential Service – Time-of-Use – Critical Peak Price + Daily Demand Pricing</b>								
Excess Energy Credit per kWh								
Critical Peak Period			(\$0.31376)	(\$0.69386)	(\$0.64273)	(\$0.59160)	(\$0.54778)	(R)(R)(R)(R)(R)
Summer On-Peak			(\$0.12835)	(\$0.25422)	(\$0.23548)	(\$0.21675)	(\$0.20070)	(R)(R)(R)(R)(R)
Summer Off-Peak			(\$0.06610)	(\$0.10846)	(\$0.10047)	(\$0.09247)	(\$0.08562)	(R)(R)(R)(R)(R)
Summer REVRT (Residential)			(\$0.06404)	(\$0.10356)	(\$0.09593)	(\$0.08830)	(\$0.08176)	(R)(R)(R)(R)(R)
Electric Vehicle Recharge Rider								
Winter All other			(\$0.06001)	(\$0.11207)	(\$0.10381)	(\$0.09555)	(\$0.08847)	(R)(R)(R)(R)(R)
Winter REVRT (Residential)			(\$0.05780)	(\$0.10681)	(\$0.09894)	(\$0.09107)	(\$0.08433)	(R)(R)(R)(R)(R)
Electric Vehicle Recharge Rider								
<b>ORM-DDP – Optional Residential Service – Multi Family – Daily Demand Pricing</b>								
Excess Energy Credit per kWh			(\$0.07078)	(\$0.13147)	(\$0.12178)	(\$0.11209)	(\$0.10379)	(R)(R)(R)(R)(R)
<b>ORM-CPP – Optional Residential Service – Multi Family – Critical Peak Price</b>								
Excess Energy Credit per kWh								
Critical Peak Period			(\$0.22914)	(\$0.49286)	(\$0.45655)	(\$0.42023)	(\$0.38910)	(R)(R)(R)(R)(R)
Summer On-Peak			(\$0.15629)	(\$0.32056)	(\$0.29694)	(\$0.27332)	(\$0.25308)	(R)(R)(R)(R)(R)

(Continued)

Issued: **02-15-23**  
Effective: **04-01-23**  
Notice No.: **23-01**  
Advice No.

Issued By:  
**Janet Wells**  
Vice President, Regulatory

Filing Accepted  
Effective

**APR 01 2023**

Public Utilities Commission  
of Nevada

NEVADA POWER COMPANY dba NV Energy  
P.O. Box 98910  
Las Vegas, NV 89151-0001  
Tariff No. 1-B  
cancels  
Tariff No. 1-A (withdrawn)

20 th Revised  
Cancelling 19 th Revised

PUCN Sheet No. 10J(4)  
PUCN Sheet No. 10J(4)

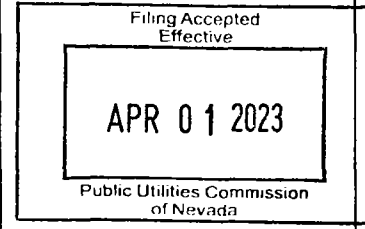
**STATEMENT OF RATES**  
**EFFECTIVE RATES APPLICABLE TO NEVADA POWER COMPANY**  
**ELECTRIC SCHEDULES**  
**Bundled Rates**  
(Continued)

Schedule Number & Type of Charge	NMR-G	NMR-A	405(1)	405(2)	405(3)	405(4)	
<b>ORM-CPP – Optional Residential Service – Multi Family</b>							
<b>– Critical Peak Price (Continued)</b>							
Summer Off-Peak	Banking	(\$0.07295)	(\$0.12473)	(\$0.11554)	(\$0.10635)	(\$0.09847)	(R)(R)(R)(R)(R)
Summer RMEVRR (Residential Multi-Family Electric Vehicle Recharge Rider)		(\$0.07020)	(\$0.11820)	(\$0.10949)	(\$0.10079)	(\$0.09332)	(R)(R)(R)(R)(R)
Winter All other		(\$0.05950)	(\$0.11086)	(\$0.10269)	(\$0.09452)	(\$0.08752)	(R)(R)(R)(R)(R)
Winter RMEVRR (Residential Multi-Family Electric Vehicle Recharge Rider)		(\$0.05734)	(\$0.10572)	(\$0.09793)	(\$0.09014)	(\$0.08346)	(R)(R)(R)(R)(R)
<b>ORM-TOU-CPP+DDP – Optional Residential Service – Multi Family</b>							
<b>– Time-of-Use – Critical Peak Price + Daily Demand Pricing</b>							
Excess Energy Credit per kWh							
Critical Peak Period		(\$0.22914)	(\$0.49286)	(\$0.45655)	(\$0.42023)	(\$0.38910)	(R)(R)(R)(R)(R)
Summer On-Peak		(\$0.14639)	(\$0.29706)	(\$0.27517)	(\$0.25328)	(\$0.23452)	(R)(R)(R)(R)(R)
Summer Off-Peak		(\$0.07295)	(\$0.12473)	(\$0.11554)	(\$0.10635)	(\$0.09847)	(R)(R)(R)(R)(R)
Summer RMEVRR (Residential Multi-Family Electric Vehicle Recharge Rider)		(\$0.07020)	(\$0.11820)	(\$0.10949)	(\$0.10079)	(\$0.09332)	(R)(R)(R)(R)(R)
Winter All other		(\$0.05586)	(\$0.10221)	(\$0.09468)	(\$0.08714)	(\$0.08069)	(R)(R)(R)(R)(R)
Winter RMEVRR (Residential Multi-Family Electric Vehicle Recharge Rider)		(\$0.05406)	(\$0.09794)	(\$0.09072)	(\$0.08351)	(\$0.07732)	(R)(R)(R)(R)(R)
<b>OLRS-DDP – Optional Large Residential Service – Daily Demand Pricing</b>							
Excess Energy Credit per kWh		(\$0.07076)	(\$0.13142)	(\$0.12174)	(\$0.11205)	(\$0.10375)	(R)(R)(R)(R)(R)
<b>OLRS-CPP – Optional Large Residential Service – Critical Peak Price</b>							
Excess Energy Credit per kWh							
Critical Peak Period		(\$0.19453)	(\$0.41068)	(\$0.38042)	(\$0.35016)	(\$0.32422)	(R)(R)(R)(R)(R)
Summer On-Peak		(\$0.17065)	(\$0.35468)	(\$0.32854)	(\$0.30241)	(\$0.28001)	(R)(R)(R)(R)(R)
Summer Off-Peak		(\$0.06708)	(\$0.11078)	(\$0.10262)	(\$0.09446)	(\$0.08746)	(R)(R)(R)(R)(R)
Summer REVRR (Residential Electric Vehicle Recharge Rider)		(\$0.06492)	(\$0.10565)	(\$0.09787)	(\$0.09009)	(\$0.08341)	(R)(R)(R)(R)(R)
Winter All other		(\$0.06240)	(\$0.11775)	(\$0.10907)	(\$0.10040)	(\$0.09296)	(R)(R)(R)(R)(R)
Winter REVRR (Residential Electric Vehicle Recharge Rider)		(\$0.05995)	(\$0.11192)	(\$0.10368)	(\$0.09543)	(\$0.08836)	(R)(R)(R)(R)(R)
<b>OLRS-TOU-CPP+DDP – Optional Large Residential Service</b>							
<b>– Time-of-Use – Critical Peak Price + Daily Demand Pricing</b>							
Excess Energy Credit per kWh							
Critical Peak Period		(\$0.19453)	(\$0.41068)	(\$0.38042)	(\$0.35016)	(\$0.32422)	(R)(R)(R)(R)(R)
Summer On-Peak		(\$0.15088)	(\$0.30773)	(\$0.28505)	(\$0.26238)	(\$0.24294)	(R)(R)(R)(R)(R)
Summer Off-Peak		(\$0.06708)	(\$0.11078)	(\$0.10262)	(\$0.09446)	(\$0.08746)	(R)(R)(R)(R)(R)
Summer REVRR (Residential Electric Vehicle Recharge Rider)		(\$0.06492)	(\$0.10565)	(\$0.09787)	(\$0.09009)	(\$0.08341)	(R)(R)(R)(R)(R)
Winter All other		(\$0.06106)	(\$0.11456)	(\$0.10612)	(\$0.09767)	(\$0.09044)	(R)(R)(R)(R)(R)
Winter REVRR (Residential Electric Vehicle Recharge Rider)		(\$0.05874)	(\$0.10906)	(\$0.10102)	(\$0.09298)	(\$0.08610)	(R)(R)(R)(R)(R)
<b>LGS-1 - Large General Service - 1</b>							
Excess Energy Credit per kWh	N/A	N/A	(\$0.10433)	(\$0.09665)	(\$0.08896)	(\$0.08237)	(R)(R)(R)(R)

(Continued)

Issued: 02-15-23  
Effective: 04-01-23  
Notice No.: 23-01  
Advice No.:

Issued By:  
Janet Wells  
Vice President, Regulatory



NEVADA POWER COMPANY dba NV Energy  
P.O. Box 98910  
Las Vegas, NV 89151-0001  
Tariff No. 1-B7  
Cancels  
Tariff No. 1-A (withdrawn)

Cancelling 132nd Revised  
131st Revised

PUCN Sheet No. 22  
PUCN Sheet No. 22

**Schedule RS-PAL  
RESIDENTIAL SERVICE PRIVATE AREA LIGHTING**

**APPLICABLE**

For private area lighting in conjunction with Domestic Service. This schedule is closed to new installations.

**TERRITORY**

Entire Nevada Service Area, as specified.

**RATES**

**Bundled Service**

**Rate A**

For luminaires installed on existing poles:

<u>Mercury Vapor (Rate Code)</u>	<u>Monthly Energy Consumption</u>	<u>Rate Per Lamp</u>	
175 watt 9,625 lumen (10)	73 kWh	\$12.61	(I)
400 watt 23,000 lumen (12)	165 kWh	\$22.12	(I)

For any Customer who was served under these rates as of April, 1984 billing period.

The Utility will not accept additional Customers with Mercury Vapor Luminaries.

<u>High Pressure Sodium (Rate Code)</u>	<u>Monthly Energy Consumption</u>	<u>Rate Per Lamp</u>	
100 watt 14,000 lumen (14)	42 kWh	\$ 9.44	(I)
200 watt 28,000 lumen (15)	83 kWh	\$13.74	(I)
400 watt 50,000 lumen (18/88)	165 kWh	\$21.82	(I)

<u>Light Emitting Diode (Rate Code)</u>	<u>Monthly Energy Consumption</u>	<u>Rate Per Lamp</u>	
200 watt (10)	70 kWh	\$12.21	(I)
200 watt (12)	70 kWh	\$10.41	(I)
100 watt (14)	35 kWh	\$ 8.41	(I)
200 watt (15)	70 kWh	\$12.04	(I)

**Rate B**

For luminaires installed on a 30-foot pole:

<u>Mercury Vapor (Rate Code)</u>	<u>Monthly Energy Consumption</u>	<u>Rate Per Lamp</u>	
175 watt 9,625 lumen (11)	73 kWh	\$19.75	(I)
400 watt 23,000 lumen (13)	165 kWh	\$29.26	(I)

<u>High Pressure Sodium (Rate Code)</u>	<u>Monthly Energy Consumption</u>	<u>Rate Per Lamp</u>	
100 watt 14,000 lumen (16)	42 kWh	\$16.58	(I)
200 watt 28,000 lumen (17)	83 kWh	\$20.88	(I)

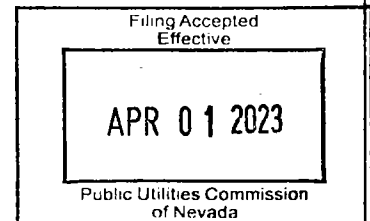
(Continued)

Issued: 02-15-23

Effective: 04-01-23

Notice No.: 23-01

Issued By:  
Janet Wells  
Vice President, Regulatory



NEVADA POWER COMPANY dba NV Energy  
P.O. Box 98910  
Las Vegas, NV 89151-0001  
Tariff No. 1-B  
Cancels  
Tariff No. 1-A (withdrawn)

Cancelling 106th Revised  
105th Revised

PUCN Sheet No. 22A  
PUCN Sheet No. 22A

**Schedule RS-PAL  
RESIDENTIAL SERVICE PRIVATE AREA LIGHTING  
(Continued)**

**RATES (Continued)**

**Bundled Service (Continued)**

<u>Light Emitting Diode (Rate Code)</u>	<u>Monthly Energy Consumption</u>	<u>Rate Per Lamp</u>
200 watt (11)	70 kWh	\$19.36
200 watt (13)	70 kWh	\$17.14
100 watt (16)	35 kWh	\$15.62

(I)  
(I)  
(I)

For any customer who was served under these rates as of the January, 1974 billing period. The Utility will not accept additional Customers where it is necessary to install a pole.

**Consumption Component of Rates**

The above rates include a Base Tariff Energy Rate of (BTER) \$0.08415 per kWh, the Renewable Energy Program Rate (REPR) of \$0.00077 per kWh, the Temporary Renewable Energy Development Charge (TRED) of \$0.00070, the Energy Efficiency Charge (EE) of \$0.00124, the Deferred Energy Accounting Adjustment Rate (See Schedule DEAA), the Natural Disaster Protection Plan Rate (NDPP) of \$0.00142 per kWh, the Expanded Solar Access Program Rate (ESAP) of \$0.00002 per kWh, and the Universal Energy Charge (UEC) of \$0.00039 per kWh (See Special Condition 1).

(R)

**BILLING PROVISIONS**

Billing for a unit must be billed to one account. Prorated billing to several accounts for one unit or a combination of units will not be made. Normally billings for the service will be billed on Customer's monthly bill for energy used.

**LATE CHARGE**

The Utility may charge a fee as set forth in Schedule MC for the late payment of a bill.

(Continued)

Issued: **02-15-23**  
Effective: **04-01-23**  
Notice No.: **23-01**

Issued By:  
Janet Wells  
Vice President, Regulatory

Filing Accepted  
Effective  
**APR 01 2023**  
Public Utilities Commission  
of Nevada



NEVADA POWER COMPANY dba NV Energy  
P.O. Box 98910  
Las Vegas, NV 89151-0001  
Tariff No. 1-B  
Cancels  
Tariff No. 1-A (withdrawn)

Cancelling 97th Revised  
96th Revised

PUCN Sheet No. 23  
PUCN Sheet No. 23

**Schedule GS-PAL  
GENERAL SERVICE PRIVATE AREA LIGHTING**

**APPLICABLE**

For private area lighting in conjunction with non-Domestic Service. This schedule is closed to new installations.

**TERRITORY**

Entire Nevada Service Area, as specified.

**RATES**

**Bundled Service**

**Rate A**

For luminaires installed On existing poles:

<u>Mercury Vapor (Rate Code)</u>	<u>Monthly Energy Consumption</u>	<u>Rate Per Lamp</u>	
175 watt 9,625 lumen (10)	73 kWh	\$12.09	(l)
400 watt 23,000 lumen (12)	165 kWh	\$20.94	(l)

For any Customer who was served under these rates as of April, 1984 billing period.

The Utility will not accept additional Customers with Mercury Vapor Luminaries.

<u>High Pressure Sodium (Rate Code)</u>	<u>Monthly Energy Consumption</u>	<u>Rate Per Lamp</u>	
100 watt 14,000 lumen (14)	42 kWh	\$ 9.13	(l)
200 watt 28,000 lumen (15)	83 kWh	\$13.15	(l)
400 watt 50,000 lumen (18/88)	165 kWh	\$20.93	(l)

<u>Light Emitting Diode (Rate Code)</u>	<u>Monthly Energy Consumption</u>	<u>Rate Per Lamp</u>	
200 watt (10)	70 kWh	\$11.71	(l)
200 watt (12)	70 kWh	\$ 9.93	(l)
100 watt (14)	35 kWh	\$ 8.18	(l)
200 watt (15)	70 kWh	\$11.53	(l)
200 watt (88)	70 kWh	\$ 9.92	(l)

**Rate B**

For luminaires installed on a 30-foot pole:

<u>Mercury Vapor (Rate Code)</u>	<u>Monthly Energy Consumption</u>	<u>Rate Per Lamp</u>	
175 watt 9,625 lumen (11)	73 kWh	\$19.24	(l)
400 watt 23,000 lumen (13)	165 kWh	\$28.08	(l)

<u>High Pressure Sodium (Rate Code)</u>	<u>Monthly Energy Consumption</u>	<u>Rate Per Lamp</u>	
100 watt 14,000 lumen (16)	42 kWh	\$16.28	(l)
200 watt 28,000 lumen (17)	83 kWh	\$20.30	(l)

(Continued)

Issued: **02-15-23**  
Effective: **04-01-23**  
Notice No.: **23-01**

Issued By:  
Janet Wells  
Vice President, Regulatory

Filing Accepted  
Effective  
**APR 01 2023**  
Public Utilities Commission  
of Nevada

NEVADA POWER COMPANY dba NV Energy  
P.O. Box 98910  
Las Vegas, NV 89151-0001  
Tariff No. 1-B  
Cancels  
Tariff No. 1-A (withdrawn)

Cancelling 85th Revised  
84th Revised

PUCN Sheet No. 23A  
PUCN Sheet No. 23A

**Schedule GS-PAL**  
**GENERAL SERVICE PRIVATE AREA LIGHTING**  
(Continued)

**RATES (Continued)**

**Bundled Service (Continued)**

**Rate B**

<u>Light Emitting Diode (Rate Code)</u>	<u>Monthly Energy Consumption</u>	<u>Rate Per Lamp</u>
200 watt (11)	70 kWh	\$ 18.87
200 watt (13)	70 kWh	\$ 16.68
100 watt (16)	35 kWh	\$ 15.40
200 watt (17)	70 kWh	\$ 18.69

(l)  
(l)  
(l)  
(l)

For any customer who was served under these rates as of the January, 1974 billing period. The Utility will not accept additional Customers where it is necessary to install a pole.

**Consumption Component of Rates**

The above rates include a Base Tariff Energy Rate of (BTER) \$0.07960 per kWh, the Renewable Energy Program Rate (REPR) of \$0.00077 per kWh, the Temporary Renewable Energy Development Charge (TRED) of \$0.00057, the Energy Efficiency Charge (EE) of \$0.00113, the Deferred Energy Accounting Adjustment Rate (See DEAA), Natural Disaster Protection Plan Rate (NDPP) of \$0.00142 per kWh, the Expanded Solar Access Program Rate (ESAP) of \$0.00002 per kWh, and the Universal Energy Charge (UEC) of \$0.00039 per kWh (See Special Condition 1).

**Distribution-only Service**

**Rate A**

Rate includes an Interclass Rate Re-Balancing Charge of \$0.01250 per kWh, the Natural Disaster Protection Plan Rate (NDPP) of \$0.00142 per kWh and the Expanded Solar Access Program Rate (ESAP) of \$0.00002 per kWh.

(l)

**For luminaires installed on existing poles:**

<u>Mercury Vapor (Rate Code)</u>	<u>Monthly Energy Consumption</u>	<u>Rate Per Lamp</u>
175 watt 9,625 lumen (10)	73 kWh	\$ 5.00
400 watt 23,000 lumen (12)	165 kWh	\$ 4.92

For any Customer who was served under these rates as of April, 1984 billing period. The Utility will not accept additional Customers with Mercury Vapor Luminaries.

<u>High Pressure Sodium (Rate Code)</u>	<u>Monthly Energy Consumption</u>	<u>Rate Per Lamp</u>
100 watt 14,000 lumen (14)	42 kWh	\$ 5.06
200 watt 28,000 lumen (15)	83 kWh	\$ 5.09
400 watt 50,000 lumen (18/88)	165 kWh	\$ 4.91

(Continued)

Issued: **02-15-23**

Effective: **04-01-23**

Notice No.: **23-01**

Issued By:  
Janet Wells  
Vice President, Regulatory

Filing Accepted  
Effective

**APR 01 2023**

Public Utilities Commission  
of Nevada

NEVADA POWER COMPANY dba NV Energy  
P.O. Box 98910  
Las Vegas, NV 89151-0001  
Tariff No. 1-B  
cancels  
Tariff No. 1-A (withdrawn)

Cancelling 141st Revised  
140th Revised

PUCN Sheet No. 24  
PUCN Sheet No. 24

**Schedule SL**  
**PUBLIC STREET LIGHTING AND TRAFFIC CONTROL SERVICE**

**APPLICABLE**

To any city, town, unincorporated community, county or state governing body for electric service to standard installations of luminaries for dusk to dawn lighting of public streets, alleys, thoroughfares, public parks and playgrounds, to electric service to traffic control signals, and to electric service to auxiliary devices in accordance with Special Condition 1. After the April, 1984 billing period, the Utility will not accept additional installations under this Tariff where it is necessary to install Mercury Luminaries. All street lighting and traffic control equipment will be owned, operated and maintained by city, county or state governing bodies.

**TERRITORY**

Entire Nevada Service Area, as specified.

**RATES**

Monthly billings shall equal the sum of the following charges:

**Metered – Bundled Service**

Consumption Charge

Base Tariff General Rate	
All kWh per kWh	\$0.00879
Base Tariff Energy Rate	
All kWh per kWh	\$0.07960
Renewable Energy Program Charge	
All kWh per kWh	\$0.00077
Temporary Renewable Energy Development Charge	
All kWh per kWh	\$0.00057
Energy Efficiency Charge	
All kWh per kWh	\$0.00132
Deferred Energy Accounting Adjustment	
See schedule DEAA	\$0.01500
Natural Disaster Protection Plan Rate	
All kWh per kWh	\$0.00142
Expanded Solar Access Program Rate	
All kWh per kWh	\$0.00002

(I)

(Continued)

<p>Issued:     <b>02-15-23</b></p> <p>Effective:  <b>04-01-23</b></p> <p>Notice No.: <b>23-01</b></p>	<p align="center">Issued By:  Janet Wells  Vice President, Regulatory</p>	<p align="center">Filing Accepted  Effective</p> <div style="border: 1px solid black; padding: 5px; text-align: center; margin: 10px auto; width: 80%;"> <p align="center"><b>APR 01 2023</b></p> </div> <p align="center">Public Utilities Commission  of Nevada</p>
---	---	---

NEVADA POWER COMPANY dba NV Energy  
P.O. Box 98910  
Las Vegas, NV 89151-0001  
Tariff No. 1-B  
cancels  
Tariff No. 1-A (withdrawn)

Cancelling 88th Revised  
87th Revised

PUCN Sheet No. 24A  
PUCN Sheet No. 24A

**Schedule SL**  
**PUBLIC STREET LIGHTING AND TRAFFIC CONTROL SERVICE**  
(Continued)

**RATES (Continued)**

**Non-Metered – Bundled Service**

<u>Mercury Vapor Lamps (Rate Code)</u>	Monthly kWh	Rate per Lamp
175 watt (20)	73	\$ 8.37
250 watt (21)	103	\$11.56
400 watt (22)	165	\$18.08

(I)  
(I)  
(I)

High Pressure Sodium (Rate Code)

100 watt (23)	42	\$4.95
200 watt (24)	83	\$9.01

(I)  
(I)

<u>Light Emitting Diode (Rate Code)</u>	Monthly kWh	Rate per Lamp
100 watt (20)	35	\$3.57
200 watt (21)	70	\$7.00
200 watt (22)	70	\$7.02
200 watt (24)	70	\$7.02

(I)  
(I)  
(I)  
(I)

**Consumption Component of Rates**

The above rates include a Base Tariff Energy Rate of (BTER) \$0.07960 per kWh, the Renewable Energy Program Rate (REPR) of \$0.00077 per kWh, the Temporary Renewable Energy Development Charge (TRED) of \$0.00057, the Energy Efficiency Charge (EE) of \$0.00132, the Deferred Energy Accounting adjustment Rate (See Schedule DEAA), the Natural Disaster Protection Plan Rate (NDPP) of \$0.00142 per kWh and the Expanded Solar Access Program Rate (ESAP) of \$0.00002 per kWh.

**Metered – Distribution-only Service**

Consumption Charge

Rate includes an Interclass Rate Re-Balancing amount of (\$0.01005) per kWh, the Natural Disaster Protection Plan Rate (NDPP) of \$0.00142 per kWh and the Expanded Solar Access Program Rate (ESAP) of \$0.00002 per kWh.

All kWh per kWh \$0.02032

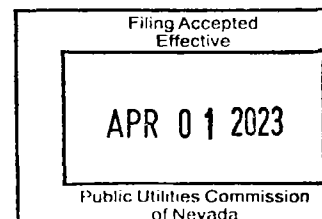
**Non-Metered – Distribution-only Service**

Rate includes an Interclass Rate Re-Balancing amount of (\$0.01005) per kWh, the Natural Disaster Protection Plan Rate (NDPP) of \$0.00142 per kWh and the Expanded Solar Access Program Rate (ESAP) of \$0.00002 per kWh.

(Continued)

Issued: **02-15-23**  
Effective: **04-01-23**  
Notice No.: **23-01**

Issued By:  
Janet Wells  
Vice President, Regulatory



NEVADA POWER COMPANY dba NV Energy  
P.O. Box 98910  
Las Vegas, NV 89151-0001  
Tariff No. 1-B  
Cancels  
Tariff No. 1-A (withdrawn)

Cancelling 135th Revised  
134th Revised

PUCN Sheet No. 25  
PUCN Sheet No. 25

**Schedule MSL-P**  
**MUNICIPAL STREET LIGHTING SERVICE - PUBLIC**

**APPLICABLE**

This schedule is applicable to service furnished to municipal or other public lighting authorities and supplied from overhead distribution lines to street, highway and other public outdoor lighting installations, where the Utility owns and maintains the entire equipment. After the April, 1984 billing period, the Utility will not accept additional installations under this rate schedule.

**TERRITORY**

Entire Nevada Service Area, as specified.

**RATES**

**Bundled Service**

<u>Lamp</u>	<u>Monthly Energy Consumption</u>	<u>Rate per Lamp</u>		
		<u>All night Service</u>		
	<u>kWh</u>	<u>Wood Pole</u>	<u>Steel Pole</u>	
<u>Incandescent Lamps (Rate Code)</u>				
175 watt 2,500 Lumen (30)	73	\$16.16		(l)
295 watt 4,000 Lumen (31)	120	\$20.39		(l)
400 watt 6,000 Lumen (32)	167	\$24.55		(l)
<u>Mercury Vapor Lamps (Rate Code)</u>				
175 watt 7,000 Lumen (33/43)	73	\$16.11	\$16.11	(l)
250 watt 11,000 Lumen (34/44)	103	\$18.91	\$18.91	(l)
400 watt 20,000 Lumen (35/45)	165	\$24.37	\$24.37	(l)
<u>Sodium Vapor Lamps (Rate Code)</u>				
100 watt 9,500 Lumen (89)	42		\$13.36	(l)
200 watt 22,000 Lumen (90)	83		\$17.12	(l)
<u>Light Emitting Diode Lamps (Rate Code)</u>				
100 watt (30)	35	\$12.38	\$12.38	(l)
200 watt (31)	70	\$15.38	\$15.38	(l)
200 watt (32)	70	\$14.86	\$14.86	(l)
200 watt (33)	70	\$15.76	\$15.76	(l)
200 watt (34)	70	\$15.57	\$15.57	(l)

**Consumption Component of Rates**

The above rates include a Base Tariff Energy Rate of (BTER) \$0.07960 per kWh, the Renewable Energy Program Rate (REPR) of \$0.00077 per kWh, the Temporary Renewable Energy Development Charge (TRED) of \$0.00057, the Energy Efficiency Charge (EE) of \$0.00132, the Deferred Energy Accounting Adjustment Rate (See Schedule DEAA), the Natural Disaster Protection Plan Rate (NDPP) of \$0.00142 per kWh and the Expanded Solar Access Program Rate (ESAP) of 0.00002 per kWh.

(Continued)

Issued: **02-15-23**  
Effective: **04-01-23**  
Notice No.: **23-01**

Issued By:  
Janet Wells  
Vice President, Regulatory

Filing Accepted  
Effective  
**APR 01 2023**  
Public Utilities Commission  
of Nevada

NEVADA POWER COMPANY dba NV Energy  
P.O. Box 98910  
Las Vegas, NV 89151-0001  
Tariff No. 1-B  
Cancels  
Tariff No. 1-A (withdrawn)

Cancelling 134th Revised  
133rd Revised

PUCN Sheet No. 27  
PUCN Sheet No. 27

**Schedule MSL-C**  
**MUNICIPAL STREET LIGHTING SERVICE – CUSTOMER-OWNED**

**APPLICABLE**

This schedule is applicable to service supplied from overhead distribution lines where the Customer owns the street lighting facilities. This schedule is closed to new Customers.

**TERRITORY**

Entire Nevada Service Area, as specified.

**RATES**

**Bundled Service**

<u>Lamp</u>	<u>Monthly Energy Consumption</u>	<u>Rate per Lamp All night Service</u>	
<u>Incandescent Lamps</u> (Rate Code)			
295 watt 4,000 Lumen (51)	120 kWh	\$12.99	(I)
<u>Mercury Vapor Lamps</u> (Rate Code)			
175 watt 7,000 Lumen (53)	73 kWh	\$8.78	(I)
250 watt 11,000 Lumen (54)	103 kWh	\$11.46	(I)
400 watt 20,000 Lumen (55)	165 kWh	\$16.94	(I)

**Consumption Component of Rates**

The above rates include a Base Tariff Energy Rate of (BTER) \$0.07960 per kWh, the Renewable Energy Program Rate (REPR) of \$0.00077 per kWh, the Temporary Renewable Energy Development Charge (TRED) of \$0.00057, the Energy Efficiency Charge (EE) of \$0.00132, the Deferred Energy Accounting Adjustment Rate (See Schedule DEAA), the Natural Disaster Protection Plan Rate (NDPP) of \$0.00142 per kWh, the Expanded Solar Access Program Rate (ESAP) of \$0.00002 per kWh and the Universal Energy Charge (UEC) of \$0.00039 per kWh (See Special Condition 1).

(Continued)

Issued: **02-15-23**  
Effective: **04-01-23**  
Notice No.: **23-01**

Issued By:  
Janet Wells  
Vice President, Regulatory

Filing Accepted  
Effective  
**APR 01 2023**  
Public Utilities Commission  
of Nevada

NEVADA POWER COMPANY  
P.O. Box 98910  
Las Vegas, NV 89151  
Tariff No. 1-B  
cancels  
Tariff No. 1-A (withdrawn)

Cancelling 5th Revised  
4th Revised

PUCN Sheet No. 36Z(21)  
PUCN Sheet No. 36Z(21)

**Schedule No. ESER**  
**EXPANDED SOLAR ENERGY RATE**

**APPLICABLE**

To all customers who met eligibility requirements and were selected to participate in the Expanded Solar Access Program ("Program") in conjunction with the Utility's bundled service rate schedules for the purchase of electricity.

**TERRITORY**

Entire Nevada Service Area, as specified.

**RATES**

- A. A Customer participating in the Program shall be responsible for all charges and rates specified in the Customer's otherwise applicable rate schedule with the following exceptions. Customers who are selected to participate in the Program, shall pay a Program rate which will replace the otherwise applicable Base Tariff Energy Rate ("BTER") and Deferred Energy Accounting Adjustment ("DEAA").
- B. The Expanded Solar Energy Rate ("ESER") paid by the customer in lieu of the combined BTER and DEAA rates will be determined based on the status of the customer's application for the program.
  - 1. A customer who is accepted into the Program as a Residential or Disadvantaged Business, but not a verified Low Income participant, shall pay the calculated Program energy rate as described in Special Condition 2.A.
  - 2. A customer who is accepted into the Program as a verified Low Income participant shall pay the Low Income Discount energy rate as calculated in Special Condition 2.B.
- C. Monthly billings for bundled service shall be adjusted by the following, in lieu of the otherwise applicable BTER and DEAA charges:

Residential ESER, all kWh, per kWh	\$0.07903	(l)
Non-Residential ESER, all kWh, per kWh	\$0.07409	(l)
Low Income Discount ESER, all kWh, per kWh	\$0.07903	(l)

(Continued)

Issued: **02-15-23**  
Effective: **04-01-23**  
Notice No.: **23-01**  
Advice No.:

Issued By:  
Janet Wells  
Vice President, Regulatory

Filing Accepted  
Effective  
**APR 01 2023**  
Public Utilities Commission  
of Nevada